



CLAD

modified wood by Accsys Technologies

DURABLE,
STABLE AND LOW
MAINTENANCE
CLADDING
ACCOYA® WOOD
CLADDING

available from:

Arnold Laver

www.laver.co.uk



Exclusive private residences in North London

WHAT IS ACCOYA® WOOD

Accoya® wood is produced from sustainably sourced, fast growing wood using a modification process from the surface to the core.

The result: a durable, dimensionally stable and beautiful material with the performance characteristics of the most durable tropical hardwoods, but offering industry-leading environmental credentials.

Accoya® is helping to protect the world's precious hardwood resources and is guaranteed for 50 years in exterior use and 25 years when used in the ground. This long life also provides an added benefit – helping to reduce carbon emissions.

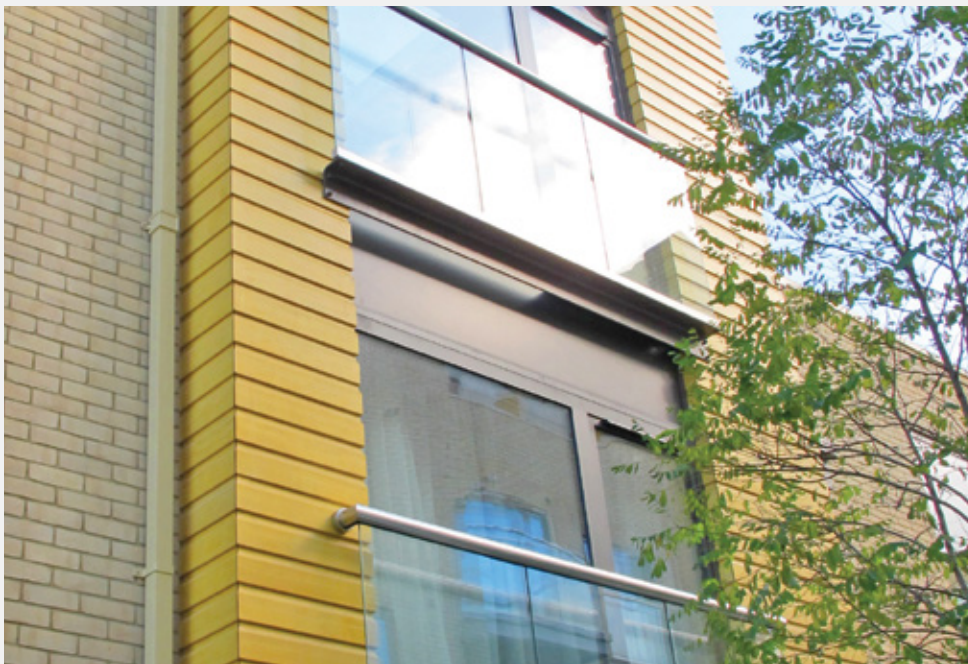
A new world of cladding possibilities is available using Accoya® wood:

- / Use of wider cladding boards is allowed by the improved dimensional stability
- / Siding joints do not open, tolerances remain tight and twist is prevented
- / Decreased overall life cycle cost thanks to the improved coating life and timber durability
- / The wood's natural appearance is retained for longer, thanks to the superior resistance to the effects of UV exposure
- / A more flexible design is made possible for architects and specifiers
- / Accoya® cladding can be machined and profiled to suit the client's requirements
- / Easier to coat with less preparation and sanding between coatings required

Arnold Laver



ACCOYA® CLADDING ON HOMES OF THE FUTURE



The development of 64 luxurious private apartments at Granville Place, North London is one of Britain's most ecologically and environmentally advanced building projects. In order to meet the Government's Code for Sustainable Homes, Accoya® wood, created from sustainably sourced wood, was used as cladding supplied by Arnold Laver throughout the development.

Accoya, with industry leading class 1 durability and exceptional dimensional stability, provides compelling environmental advantages over slow-growing unsustainable hardwoods.

Project Architect, Tom Robinson said "The project is the first development I have seen that successfully

delivers what the market wants with sustainability in mind. All rooms are filled with light, are tastefully fitted out and all benefit from outside space. Accoya wood provides a perfect finish to our apartments, its outstanding green credentials including its C2C Gold Standard award made it the perfect fit for this project."

CLADDING IN THE NETHERLANDS: THE FIRST CRADLE-TO-CRADLE INSPIRED DEVELOPMENT



THE SCENARIO: The Bosch Siemens HOME (B/S/H) office, called The Inspiration House, is the first building designed for Park 20|20 (the first Cradle-to-Cradle inspired full service development in the Netherlands), and is home to five of the top brands in household appliances: Bosch, Siemens, Gaggenau, Neff and Solitaire. This is the first time the offices and showrooms supporting these brands have been under one roof together.

THE SOLUTION: The Inspiration House 20|20 was designed by architect William McDonough with Michael Braungart, the founder of the cradle-to-cradle movement. Accoya® wood was chosen for the cladding and windows because it is Cradle-to-Cradle Gold Certified.

THE RESULT: Cradle-to-Cradle Certification is a rigorous and comprehensive certification program that evaluates products and materials for human health, environmental health and recyclability. Products are analysed within the confines of five stringent categories; Material Health, Material Reutilization, Renewable Energy Use, Water Stewardship and Social Responsibility. Accoya® wood has achieved Gold Certification as it met successfully with

all the given criteria, which include no trace of problematic chemicals, the use of over 50% renewable energy in the manufacturing process and a high amount of material reutilization. This means that the product contains materials that are designed to be recycled as technical or biological nutrients in future life cycles.



NIJMEGEN COPPER CLADDING



The psychiatric institution GGZ-Nijmegen consisted of several buildings located in a rural setting on the edge of the Stuwwalbos, the Netherlands. The buildings date back to the early sixties, no longer met the current quality standards and therefore following a feasibility study the buildings had to be demolished and the new clinics had to be built in the same location. The clinic was designed by BogermanDill Architects

from Amsterdam in cooperation with SBH Architects + Consultants from Arnhem.

Several wood species were considered for this new building but Accoya wood was chosen because it could form part of the highly engineered shaped and curved design but remaining stable and durability afterwards.

The 4.4 kilometre and 1.4 kilometre slats were curved after the specially shaped blades were steamed and bent by De Jong's Wood products from Drogeham, the Netherlands.

Accoya wood met the performance and design requirements of the client.

BLACK IS BACK - STRIKING BLACK ACCOYA® CLADDING ON DUTCH CHURCH



THE SCENARIO: The construction of a church for the Apolistic Society in The Hague, The Netherlands that reflecting the church communities values of providing a welcoming and sustaining environment.

THE SOLUTION: The church, designed by Architect Martin Eijkelenboom, is completely built from sustainable materials and the original building has been extended and improved. The church has beautiful curved facades, covered with black coated band sawn Accoya® cladding. Accoya decking was also part of the project.

THE RESULT: Generally problems occur with dark coatings on cladding, due to shrink and swell being exasperated by the solar gain, but Accoya wood's superior dimensional stability negates this.

DURABLE, STABLE AND LOW MAINTENANCE



OUTSTANDING DURABILITY



CONSISTENT QUALITY THROUGHOUT



UV RESISTANT



DIMENSIONALLY STABLE



RETAINED STRENGTH & HARDNESS



NATURALLY INSULATING



INSECT BARRIER



PERFECT FOR COATING



NATURALLY BEAUTIFUL WOOD



FROM SUSTAINABLE SOURCES



EXCELLENT MACHINABILITY



NON-TOXIC & RECYCLABLE

Birmingham
Tel: 0121 552 7788
Fax: 0121 544 7186
Email: sales@birmingham.timberworld.co.uk

Leeds
Tel: 0113 270 4086
Fax: 0113 272 3833
Email: sales@leeds.timberworld.co.uk

Sheffield Central Call Collect
Tel: 0114 255 7341
Fax: 0114 292 3660
Email: sales@sheffield.timberworld.co.uk

London
Tel: 01708 529 500
Fax: 01708 529 501
Email: sales@london.timberworld.co.uk

Sheffield Mosborough
Tel: 0114 276 4700
Fax: 0114 276 4701
Email: sales@sheffield.timberworld.co.uk

Bradford Timber World
Tel: 01274 732 861
Fax: 01274 737 060
Email: sales@bradford.timberworld.co.uk

Manchester
Tel: 0161 777 9000
Fax: 0161 777 9007
Email: sales@manchester.timberworld.co.uk

Hull
Tel: 01482 324 525
Fax: 01482 216 478
Email: sales@hull.timberworld.co.uk

North East
Tel: 0191 428 6666
Fax: 0191 428 6622
Email: sales@northeast.timberworld.co.uk

Kidderminster
Tel: 01562 66557
Fax: 01562 864 557
Email: sales@kidderminster.timberworld.co.uk

Reading
Tel: 0118 975 1100
Fax: 0118 975 1900
Email: sales@reading.timberworld.co.uk



www.accoya.com

ACCOYA® and the Trimarque Device are registered trademarks owned by Titan Wood Limited, a wholly owned subsidiary of Accsys Technologies PLC, and may not be used or reproduced without written permission.

Accoya® wood should always be installed and used in accordance with the written instructions and guidelines of Accsys Technologies and/or its agents (available upon request). Accsys Technologies accepts no liability for any defect, damage or loss that may occur where such written instructions and guidelines are not adhered to.

The information contained within this document has not been independently verified, and no warranty (express or implied) or representation is given in respect of the same, including without limitation as to its accuracy, completeness or fitness for any purpose. Accsys Technologies and its affiliates, officers, employees or advisers expressly disclaim any liability to the fullest extent permitted by law for any loss or damage whatsoever arising in respect of such information or the result of having acted upon it.