

Arnold Laver

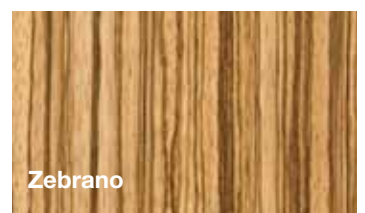
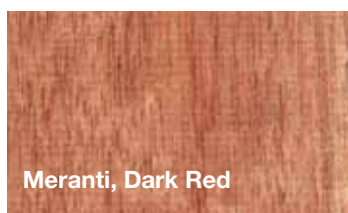
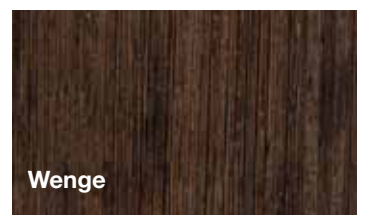
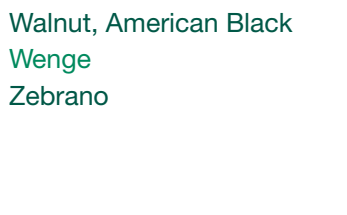
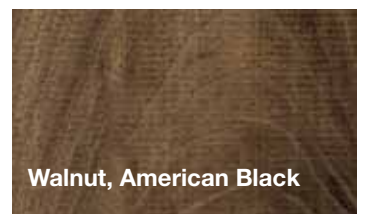
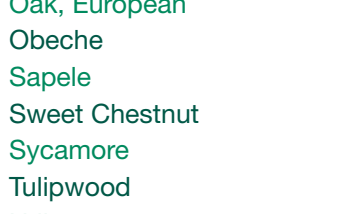
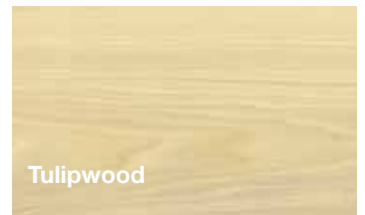
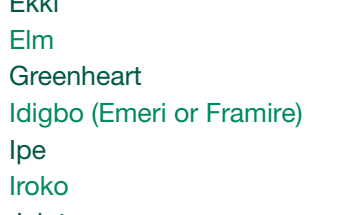
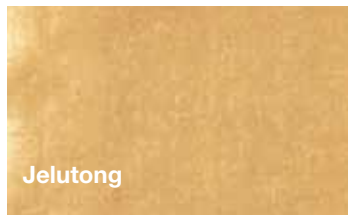
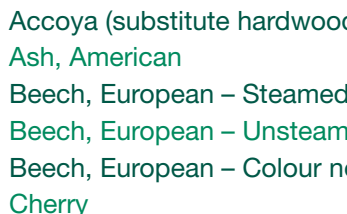
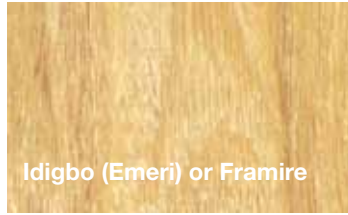
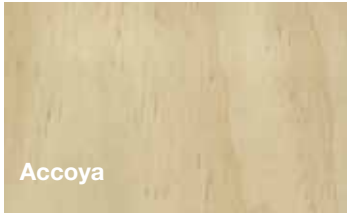
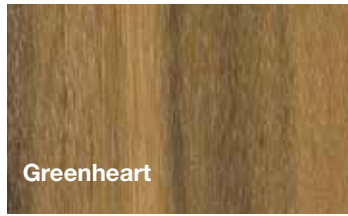
TIMBER

Hardwood

Product Guide



Hardwood Product Guide



- Accoya (substitute hardwood)
- Ash, American
- Beech, European - Steamed
- Beech, European - Unsteamed
- Beech, European - Colour no defect
- Cherry
- Ekki
- Elm
- Greenheart
- Idigbo (Emeri or Framire)
- Ipe
- Iroko
- Jelutong
- Keruing
- Koto
- Maple
- Meranti, Dark Red
- Oak, American Red
- Oak, American White
- Oak, European
- Obeche
- Sapele
- Sweet Chestnut
- Sycamore
- Tulipwood
- Utile
- Walnut, American Black
- Wenge
- Zebrano



Arnold Laver

Welcome to our hardwood collection

Hardwood is the ultimate versatile material, with applications ranging from exquisite veneers and furniture, through the world of musical instruments, to flooring, construction and boat-building. It is a material of real beauty, available in countless combinations of species, specifications and colours.

Our experience in hardwood, gained over decades of meeting the exacting requirements of our customers, is your guarantee of satisfaction. Whatever your hardwood requirements, we'll work with you to ensure that you get the most appropriate product at the best possible price.

At Arnold Laver, we carry what we believe to be one of the widest ranges in the UK and we pride ourselves on the high standards of our timber. We aim to be able to meet virtually any requirement from stock. When we can't we'll source it specially. We also offer a full machining service and can supply everything from simple lengths of timber to intricate mouldings.

When you choose us as your hardwood supplier, we see it as the start of a long-term relationship and we'll do everything within our power to earn your respect and retain your business.



2



1



- 1. Accoya
- 2. Ash American
- 3. Beech Steamed



3

Accoya

Substitute Hardwood

FSC available

Accoya® wood is a leading product, with properties that match those of the best tropical hardwood. It is manufactured using a proprietary acetylation process and uses fast growing timber – such as Radiata Pine - from sustainable sources.

Class leading dimensional stability together with an improved resistance to insect attack and moisture, help to deliver a very robust timber.

Grades	A	A1	Clear	Kiln dried	Square edged	
Density	Durability	Machinability	Moisture Movement	Paint / Finish		
432 to 592 kg/m ³	Very durable	Good	Small	Excellent		
Size : dimension stock						
25mm	32mm	38mm	50mm	63mm	75mm	100mm
✓		✓	✓	✓	✓	

Uses: Interior and exterior joinery; cladding, decking and structural applications.

Ash American

Franxinus Spp

FSC available

American ash is similar in appearance to European ash. The sapwood is light coloured to nearly white and the heartwood varies from greyish brown to light brown, to pale yellow streaked with brown. The degree and availability of light coloured sapwood, and other properties, will vary according to the growing regions.

Southern ash lumber will be faster grown and contain more sapwood and therefore, a higher percentage of white colour, compared to Northern ash, which has a more open texture and grain. The wood is generally straight grained with a coarse uniform texture

Grades	FAS	Kiln dried	Square edged			
Density	Durability	Machinability	Moisture Movement	Paint / Finish		
670 kg/m ³	Non durable	Excellent	Medium	Good		
Size : available in 4" and wider, plus 9" and wider, plus strips						
25mm	32mm	38mm	50mm	63mm	75mm	100mm
✓	✓	✓	✓	✓	✓	✓

Uses: Coachwork, interior joinery, furniture, kitchen doors.

Beech, European – Steamed

Fagus Sylvatica

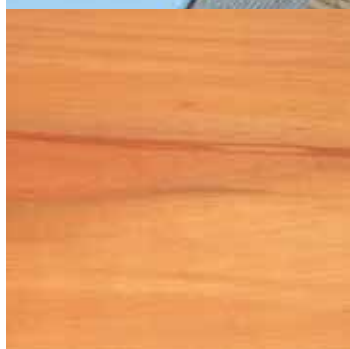
FSC/PEFC

Often, there is no clear colour distinction between sapwood and heartwood, the wood being very pale brown when freshly cut, turning reddish-brown on exposure, and deep reddish-brown under the influence of steaming treatment.

The wood is typically straight grained, with a fine, even texture, but varying in density and hardness according to the locality of growth.

Grades	Kiln dried	Prime	Square edged	Steamed		
Density	Durability	Machinability	Moisture Movement	Paint / Finish		
720 kg/m ³	Non durable	Excellent	Large	Excellent		
Size : available in 4" and wider						
25mm	32mm	38mm	50mm	63mm	75mm	100mm
✓	✓	✓	✓	✓	✓	

Uses: Joinery (interior), shopfitting and flooring.



- 1. Beech European - Unsteamed
- 2. Beech European - Colour no defect



We provide a
flexible and
class leading
service

Beech, European – Unsteamed

Fagus Sylvatica

FSC available

Strong straight grained with plain appearance.

Grades	Kiln dried	Prime	Square edged	Unsteamed		
Density	Durability	Machinability	Moisture Movement	Paint / Finish		
720 kg/m ³	Non durable	Excellent	Large	Excellent		
Size : available in 4" and wider						
25mm	32mm	38mm	50mm	63mm	75mm	100mm
✓	✓	✓	✓	✓	✓	

Uses: Joinery (interior), shopfitting and flooring.

Beech, European – Colour no defect

Fagus Sylvatica

FSC/PEFC

Creamy or pale brown in appearance. Straight grained with an even texture.

Grades	CND	Kiln dried	Square edged			
Density	Durability	Machinability	Moisture Movement	Paint / Finish		
720 kg/m ³	Non durable	Excellent	Large	Excellent		
Size : available in 4" and wider						
25mm	32mm	38mm	50mm	63mm	75mm	100mm
✓	✓	✓	✓	✓	✓	

Uses: Joinery (interior), shopfitting and flooring.

Cherry

Prunus Spp.

The heartwood of cherry varies from rich red to reddish brown and will darken on exposure to light. In contrast the sapwood is creamy white. The wood has a fine uniform straight grain, smooth texture, and may naturally contain brown pith-flecks and small gum pockets.

Grades	FAS	Kiln dried	90-80 colour sort			
Density	Durability	Machinability	Moisture Movement	Paint / Finish		
580 kg/m ³	Moderately durable	Excellent	Medium	Excellent		
Size : available in 4" and wider						
25mm	32mm	38mm	50mm	63mm	75mm	100mm
✓	✓	✓	✓	✓	✓	✓

Uses: High-class joinery, musical instruments, pattern making, boat interiors and cabinets.

Ekki

Lophira Alata

A hard heavy wood with sapwood that is pale pink and sharply defined from the heart-wood, which is red-brown to dark brown with a slightly speckled appearance due to white deposits in the pores. The grain is usually interlocked and the texture is coarse.

Grades	Air dried	Prime				
Density	Durability	Machinability	Moisture Movement	Paint / Finish		
1070 kg/m ³	Very durable	Difficult with hand tools but better with machines	Large	Poor		
Size : dimension stock						
25mm	32mm	38mm	50mm	63mm	75mm	100 to 350mm
✓	✓	✓	✓	✓	✓	✓

Uses: Structural heavy use such as decking and marine construction.

Elm

Ulmus Spp.

The heartwood is a dull brown colour, clearly defined when green from the lighter-coloured sapwood. The irregular growth rings together with the cross-grained character of the wood gives it an attractive appearance, but the large early-wood pores produce quite a coarse texture.

Grades	Kiln dried	Prime				
Density	Durability	Machinability	Moisture Movement	Paint / Finish		
560 kg/m ³ (can vary by 20%)	Non durable	Medium	Medium	Medium		
Size : available in 4" and wider						
25mm	32mm	38mm	50mm	63mm	75mm	100mm
✓	✓	✓	✓	✓	✓	✓

Uses: Furniture, interior joinery and flooring.

1



2



3

1. Cherry
2. Ekki
3. Elm



Greenheart

Ocotea Rodiaei

FSC available

Greenheart is a hard, heavy and elastic timber, but inclined to splinter when fractured. Greenheart is one of the strongest woods in tropical America. The sapwood is pale yellow / greenish, and is not clearly demarcated from the heartwood which varies in colour from yellowish-green, greenish-yellow,

or light olive through golden yellow, dark olive, or yellowish-brown to very dark brown. blackish, or black. The wood from decayed or defective logs has a distinctive yellow colour. The grain can vary from being straight to showing a 'roey' figure, with a texture that is fine and uniform.

Grades	Air dried	Prime				
Density	Durability	Machinability	Moisture Movement	Paint / Finish		
1040 kg/m ³	Very durable	Difficult	Medium	Difficult		
Size : please contact for available sizes						
25mm	32mm	38mm	50mm	63mm	75mm	100 to 350mm
✓	✓	✓	✓	✓	✓	✓

Uses: Structural, heavy use in freshwater and marine applications.



1

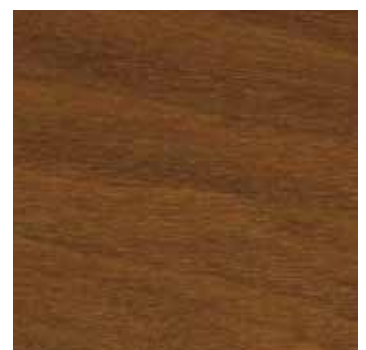


2

1. Greenheart
2. Idigbo or Emeri
3. Ipe



3



Idigbo (Emeri or Framire)

Terminalia Ivorensis

A durable medium weight timber with a plain, pale yellow to light brown coloured wood, sometimes showing a zonal figure originating in the growth rings, suggesting plain oak. There is little distinction between sapwood and heartwood, though the heartwood is darker in colour.

The grain is straight to slightly irregular, and the texture is uneven and coarse.

Grades	FAS	Kiln dried	Square edged			
Density	Durability	Machinability	Moisture Movement	Paint / Finish		
560 kg/m ³	Durable	Medium	Small	Good		
Size : available in 4" and wider						
25mm	32mm	38mm	50mm	63mm	75mm	100mm
✓	✓	✓	✓	✓	✓	✓

Uses: Furniture and interior / exterior joinery.

Ipe

Tabebuia Spp.

A heartwood which is yellow / green when first cut, turning a light to dark olive-brown with lighter or darker streaks. The texture is fine; the grain is straight to occasionally irregular, and the lustre is low to medium. Pores in the heartwood, which appear as fine yellow dots, are filled with a yellowish,

powder (lapachol), and appear on longitudinal surfaces as yellow lines. The wood may appear oily and cold to the touch and often has fine ripple marks present.

Grades	Air dried	Prime				
Density	Durability	Machinability	Moisture Movement	Paint / Finish		
1040 kg/m ³	Very durable	Difficult	Medium	Medium		
Size : dimension stock						
19mm	25mm	32mm	50mm	63mm	75mm	100mm
✓	✓	✓				

Uses: Decking and flooring; mouldings, furniture and tool handles plus exterior joinery.

Iroko

Chlorophora Excelsa

FSC available

A durable attractive and strong timber, which has a heartwood that is a distinct yellow colour when cut; but on exposure to light it quickly becomes golden-brown. The sapwood is narrow and the grain is usually interlocked and the texture is rather coarse but even. Large, hard deposits of calcium carbonate

called 'stone' deposits, are sometimes present in cavities, probably as a result of injury to the tree. They are often enclosed by the wood and not visible until the time of sawing, though the wood around them may be darker in colour, thus giving an indication of their presence.

Grades	FAS	Kiln dried	Square edged			
Density	Durability	Machinability	Moisture Movement	Paint / Finish		
660 kg/m ³	Very durable	Medium	Small	Good		
Size : available in 4" and wider						
25mm	32mm	38mm	50mm	63mm	75mm	100mm
✓	✓	✓	✓	✓	✓	✓

Uses: Interior and exterior joinery, bench-tops and laboratory equipment plus boat-building.

Jelutong

Dyera Costulata

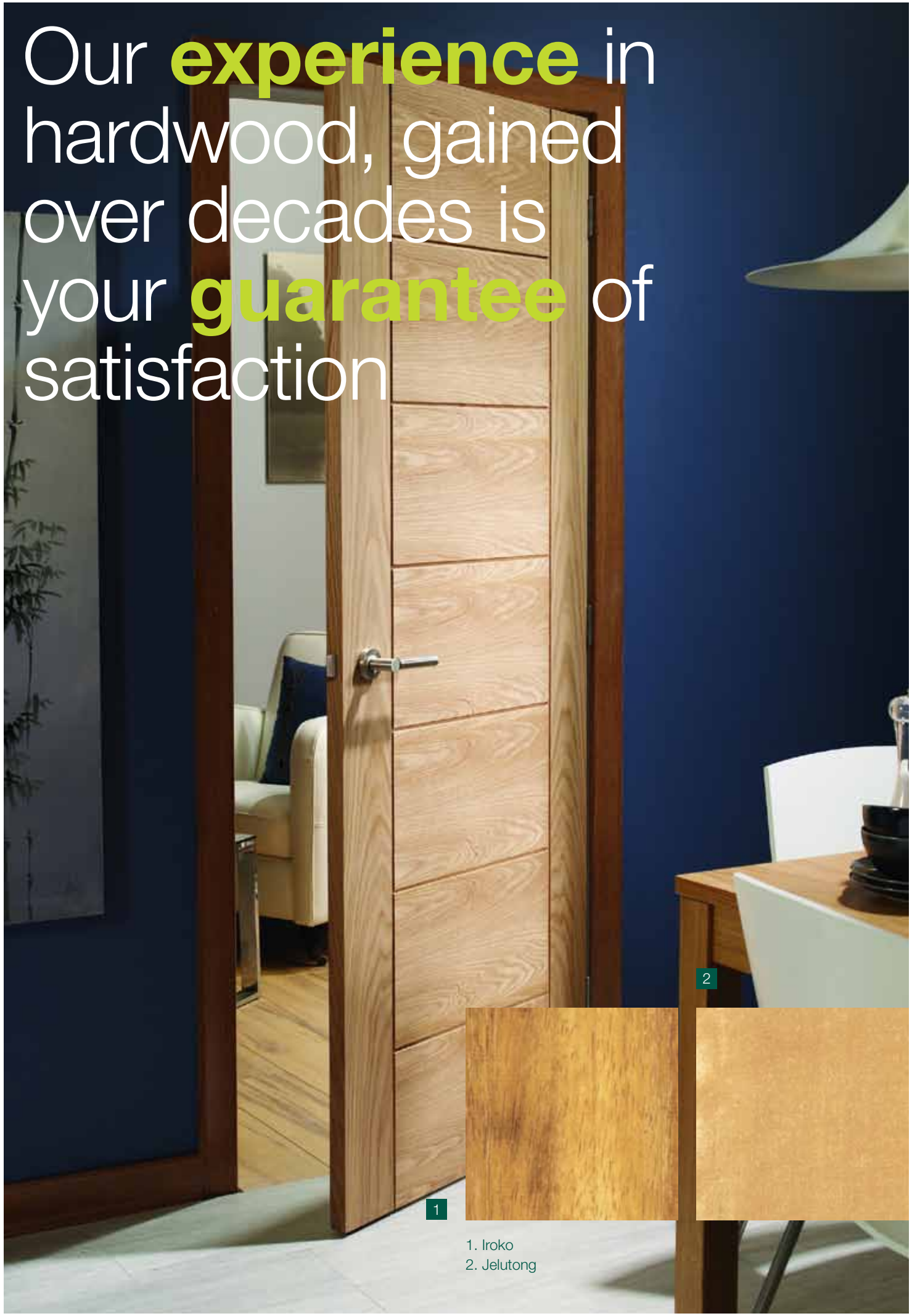
A lightweight timber with a stable nature and easily worked. Soft and slightly brittle, the wood is creamy-white when first cut turning a pale straw colour after exposure. The planed wood is lustrous or very lustrous, without any figure, but slit-like radial passages may be seen on tangential lines

as lens-shaped bodies. The grain is usually straight, and the texture is fine and even.

Grades	Kiln dried	Select and Better	Square edged			
Density	Durability	Machinability	Moisture Movement	Paint / Finish		
470 kg/m ³	Non durable	Good	Small	Good		
Size : available in 6" and wider						
25mm	32mm	38mm	50mm	63mm	75mm	100mm
✓	✓	✓	✓	✓	✓	

Uses: Pattern making and core for fire-check doors.

Our **experience** in
hardwood, gained
over decades is
your **guarantee** of
satisfaction



1



2



- 1. Iroko
- 2. Jelutong



- 1. Keruing
- 2. Koto
- 3. Maple

2



3

Keruing

Dipterocarpus Spp.

The grain is usually straight but may be shallowly interlocked, and the texture is moderately coarse or coarse, but even. The timber contains an oleo-resin which exudes in a number of pieces especially on the end grain when exposed to sunlight.

Grades	Square edged	Standard and Better				
Density	Durability	Machinability	Moisture Movement	Paint / Finish		
740 kg/m ³	Durable	Medium	Medium	Difficult		
Size : dimension stock						
25mm	32mm	38mm	50mm	63mm	75mm	100mm
✓	✓	✓	✓	✓	✓	✓

Uses: Structural use, vehicle body building, farm buildings, door and window sills.

Koto

Pterygota bequaertii / Pterygota macrocarpa

Koto is similar to Ramin with strength properties close to European Ash, but it is not as hard or tough and more susceptible to splitting. There is no distinction between the sapwood and heartwood and the timber is cream in colour,

sometimes with a greyish tint. The texture is coarse and the grain interlocked.

Grades	Kiln dried	Square edged	Standard and Better			
Density	Durability	Machinability	Moisture Movement	Paint / Finish		
660 kg/m ³	Non durable	Good	Medium	Good		
Size : available in 4" and wider						
25mm	32mm	38mm	50mm	63mm	75mm	100mm
✓		✓	✓			

Uses: Interior joinery.

Maple

Acer Saccharum

FSC available

The wood has a close fine texture and is generally straight grained, but it can also occur as 'curly', 'fiddleback', and 'birds-eye' figure. Hard maple is strong, heavy and hard with heartwood that is light reddish-brown with deeper-coloured late-wood bands.

The sapwood is white in colour, and furnishes the white maple prized for certain uses. It differs mainly from the soft maples in its greater density and firmer texture.

Grades	FAS	Kiln dried	Square edged			
Density	Durability	Machinability	Moisture Movement	Paint / Finish		
630 kg/m ³	Non durable	Medium	Small	Good		
Size : available in 4" and wider						
25mm	32mm	38mm	50mm	63mm	75mm	100mm
✓	✓	✓	✓	✓	✓	

Uses: Flooring, musical instruments, joinery, furniture and sports goods. Doors, worktops and mouldings.

Meranti, Dark Red

Shorea Spp.

PEFC

Quite durable and well suited to joinery, the sapwood is lighter in colour and distinct from the heartwood which is red-brown darkening to a dark red; planed surfaces fairly lustrous, stripe figure on radial surfaces. Grey-coloured narrow streaks are often present on all longitudinal surfaces, caused by

concentric layers of resin canals. The texture is rather coarse but even, and the grain is interlocked and wavy.

Grades	Kiln dried	Select and Better	Square edged			
Density	Durability	Machinability	Moisture Movement	Paint / Finish		
670 kg/m ³	Durable	Medium	Small	Medium		
Size : available in 6" and wider plus 9" and wider						
25mm	32mm	38mm	50mm	63mm	75mm	100mm
✓	✓	✓	✓	✓	✓	✓

Uses: Cladding, internal and external joinery.

Oak, American Red

Querous Spp.

FSC available

A non-durable timber which varies in colour from pink to pale reddish-brown; there is often a reddish cast to the wood although sometimes it approaches white oak in colour.

The large rays do not produce such an attractive figure as they do in white oak, and generally speaking, the wood is coarser in texture. The quality of red oak depends greatly on growth conditions.

Grades	FAS	Kiln dried	Square edged			
Density	Durability	Machinability	Moisture Movement	Paint / Finish		
770 kg/m ³	Moderately durable	Medium	Small	Good		
Size : available in 4" and wider						
25mm	32mm	38mm	50mm	63mm	75mm	100mm
✓	✓	✓	✓	✓	✓	

Uses: Interior joinery, flooring and furniture.

Oak, American White

Querous Spp.

FSC available

American white oak is more variable in colour than European Oak, ranging from pale yellow-brown to pale reddish-brown, often with a pinkish tint. The numerous series of rays are generally higher than those of the red oaks producing a more prominent and attractive silver-grain figure on quarter-sawn

surfaces. The grain is generally straight, and the texture varies from coarse to medium coarse.

Grades	FAS	Kiln dried	Prime	Square edged		
Density	Durability	Machinability	Moisture Movement	Paint / Finish		
750 kg/m ³	Moderately durable	Medium	Small	Good		
Size : available 4" and wider, plus 9" and wider plus strips						
25mm	32mm	38mm	50mm	63mm	75mm	100mm
✓	✓	✓	✓	✓		

Uses: High-quality interior and exterior joinery, flooring, boats, barrels and structural work.



2



1



3

1. Meranti Dark Red
2. Oak, American Red
3. Oak, American White



Oak, European

Querous Spp.

FSC available

Normally straight grained but this, as well as the quality, will vary depending upon the origin of the timber. The heartwood ranges from yellow / brown to deep brown, whilst the sapwood is a lighter colour.

Grades	Capri oak character grade	Kiln dried	Prime	Square edged		
Density	Durability	Machinability	Moisture Movement	Paint / Finish		
720 kg/m ³	Durable	Medium to difficult	Small	Good		
Size : available 4" and wider						
25mm	32mm	38mm	50mm	63mm	75mm	100mm
✓	✓	✓	✓	✓	✓	✓

Uses: Boat building, high-class joinery, coffins, flooring and ecclesiastical work. Sleepers, decking, cladding and structural applications.

Obeche

Triplochiton Scleroxylon

A fairly soft, but stable timber with a fine and even; the grain is often interlocked, giving a faintly striped appearance on quarter-sawn surfaces, otherwise there is seldom any decorative figure. The timber is creamy-white to pale yellow

in colour with little or no distinction between the sapwood and heartwood; the sapwood however, may be up to 150mm wide.

Grades	FAS	Kiln dried	Square edged			
Density	Durability	Machinability	Moisture Movement	Paint / Finish		
390 kg/m ³	Non durable	Good	Small	Good		
Size : available 4" and wider						
25mm	32mm	38mm	50mm	63mm	75mm	100mm
✓	✓	✓	✓			

Uses: Mouldings, cabinet work, furniture and specialist joinery in musical instruments.

1



- 1. Oak European
- 2. Obeche

2



Whatever your
hardwood requirements,
we'll work with you



2

- 1. Sapele
- 2. Sweet Chestnut
- 3. Sycamore



1



3

Sapele

Entandrophragma Cylindricum

FSC available

A moderately durable timber with a pleasing appearance, Sapele is characterised by a marked and regular stripe, particularly pronounced on quarter-sawn surfaces. Occasionally mottle figure is present, It is fairly close textured, and the grain

is interlocked. The sapwood is pale yellow or whitish, the heartwood pinkish when freshly cut, darkening to typical mahogany colour of reddish-brown.

Grades	FAS	Kiln dried	Square edged			
Density	Durability	Machinability	Moisture Movement	Paint / Finish		
640 kg/m ³	Durable	Medium	Small	Good		
Size : available 6" and wider						
25mm	32mm	38mm	50mm	63mm	75mm	100mm
✓	✓	✓	✓	✓	✓	✓

Uses: Furniture, interior and exterior joinery. Shopfitting and flooring.

Sweet Chestnut

Castanea Sativa

FSC available

Straight grained and quite course in texture, the sapwood is narrow, and distinct from the heartwood which is yellowish-brown in colour; closely resembling oak in appearance.

The grain may be straight, but is more commonly spiral, particularly in wood from old trees, while logs are liable to

cup and ring-shake. It contains tannin, so blue-black discolourations are prone to appear on the wood, when it comes into contact with iron or iron. Due to its acidic character, chestnut tends to accelerate the corrosion of metals, particularly when moist.

Grades	Clear	Kiln dried	Square edged			
Density	Durability	Machinability	Moisture Movement	Paint / Finish		
560 kg/m ³	Moderately durable	Good	Small	Excellent		
Size : available 4" and wider						
25mm	32mm	38mm	50mm	63mm	75mm	100mm
✓	✓	✓	✓	✓	✓	

Uses: Interior and exterior joinery. Cladding.

Sycamore

Acer Pseudoplatanus

FSC available

Sycamore is generally straight grained but may be curvy or wavy grained, and the texture is fine it has strength properties similar to that of Oak. There is no difference by colour between sapwood and heartwood, the wood being white, or yellowish

-white when freshly cut, with a natural lustre especially noticeable on quarter-sawn surfaces.

Grades	Kiln dried	Log sawn				
Density	Durability	Machinability	Moisture Movement	Paint / Finish		
630 kg/m ³	Non durable	Good	Small	Good		
Size : available 6" and wider						
25mm	32mm	38mm	50mm	63mm	75mm	100mm
✓	✓	✓	✓	✓	✓	✓

Uses: Interior joinery, cabinet making and kitchen utensils.

Tulipwood

Liriodendron Tulipifera

FSC available

An even texture and grain makes this an ideal timber for light construction. The wood is straight-grained, fine-textured and fairly soft. The sapwood is white, and in second-growth trees, very wide; the heartwood is variable in colour, ranging from olive green to yellow or brown, and may be streaked with steel-blue.

Grades	FAS	Kiln dried	Square edged			
Density	Durability	Machinability	Moisture Movement	Paint / Finish		
450 kg/m ³	Non durable	Good	Small	Good		
Size : available 4" and wider plus 10" and wider						
25mm	32mm	38mm	50mm	63mm	75mm	100mm
✓	✓	✓	✓	✓	✓	✓

Uses: Interior joinery, fittings, mouldings and furniture.

Utile

Entandrophragma Utile

A very popular durable hardwood used for high-class joinery. It closely resembles Sapele, both in appearance and properties, but is more open in texture due to the larger pores, and generally lacks the cedar-like odour of Sapele. The interlocked grain produces a broad ribbon-stripe, often wider

irregular than that of Sapele. The heartwood and sapwood are distinct; the heartwood is pale pink when initially cut, darkening on exposure to reddish-brown.

Grades	FAS	Kiln dried	Square edged			
Density	Durability	Machinability	Moisture Movement	Paint / Finish		
660 kg/m ³	Durable	Medium	Medium	Good		
Size : available 4" and wider						
25mm	32mm	38mm	50mm	63mm	75mm	100mm
✓	✓	✓	✓	✓	✓	✓

Uses: Interior joinery and shopfitting, plus external joinery and decking.

Walnut, American Black

Juglans Nigra

FSC available

Strong and moderately durable, American black walnut is very fashionable for use in furniture, cabinet making, architectural interiors and high class joinery. Walnut is a tough, hard timber of medium density, with moderate bending and crushing strengths and low stiffness. It has a good steam bending

classification. It has a creamy white sapwood, while the heartwood is light brown to dark chocolate brown, occasionally with a purplish cast and darker streaks. The wood is generally straight grained, but sometimes with a wavy or curly grain.

Grades	FAS	Kiln dried	Square edged			
Density	Durability	Machinability	Moisture Movement	Paint / Finish		
660 kg/m ³	Durable	Good	Small	Excellent		
Size : available 4" and wider						
25mm	32mm	38mm	50mm	63mm	75mm	100mm
✓	✓	✓	✓	✓	✓	

Uses: Furniture, cabinet making, architectural interiors, high class joinery, doors, flooring, gunstocks and panelling.

1

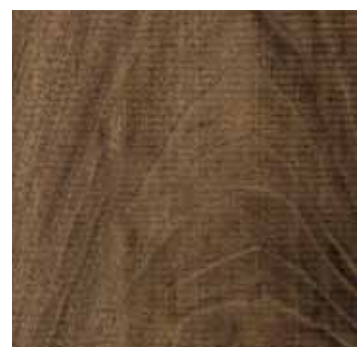


2



3

1. Tulipwood
2. Utile
3. Walnut American Black





1

1. Wenge
2. Zebrano

2

We **pride**
ourselves on
the **high**
standards of
our timber

Wenge

Millettia Laurentii

A durable and easy to work timber with straight grain, it has a rather coarse texture. The sapwood is whitish and the heartwood dark brown with fine, close blackish veining, giving the wood an attractive. Wenge is a very hard and heavy wood.

Grades	FAS	Kiln dried	Square edged			
Density	Durability	Machinability	Moisture Movement	Paint / Finish		
880 kg/m ³	Durable	Good	Small	Good		
Size : available 4" and wider						
25mm	32mm	38mm	50mm	63mm	75mm	100mm
✓	✓	✓	✓			

Uses: Furniture, flooring, veneer and turning.

Zebrano

Microberlinia Brazzavillensis

A hard and heavy timber with a grain that is wavy or interlocked, producing alternating hard and soft grained material. The heartwood is a light yellow / golden with narrow veining or streaks of dark brown to almost black, giving the

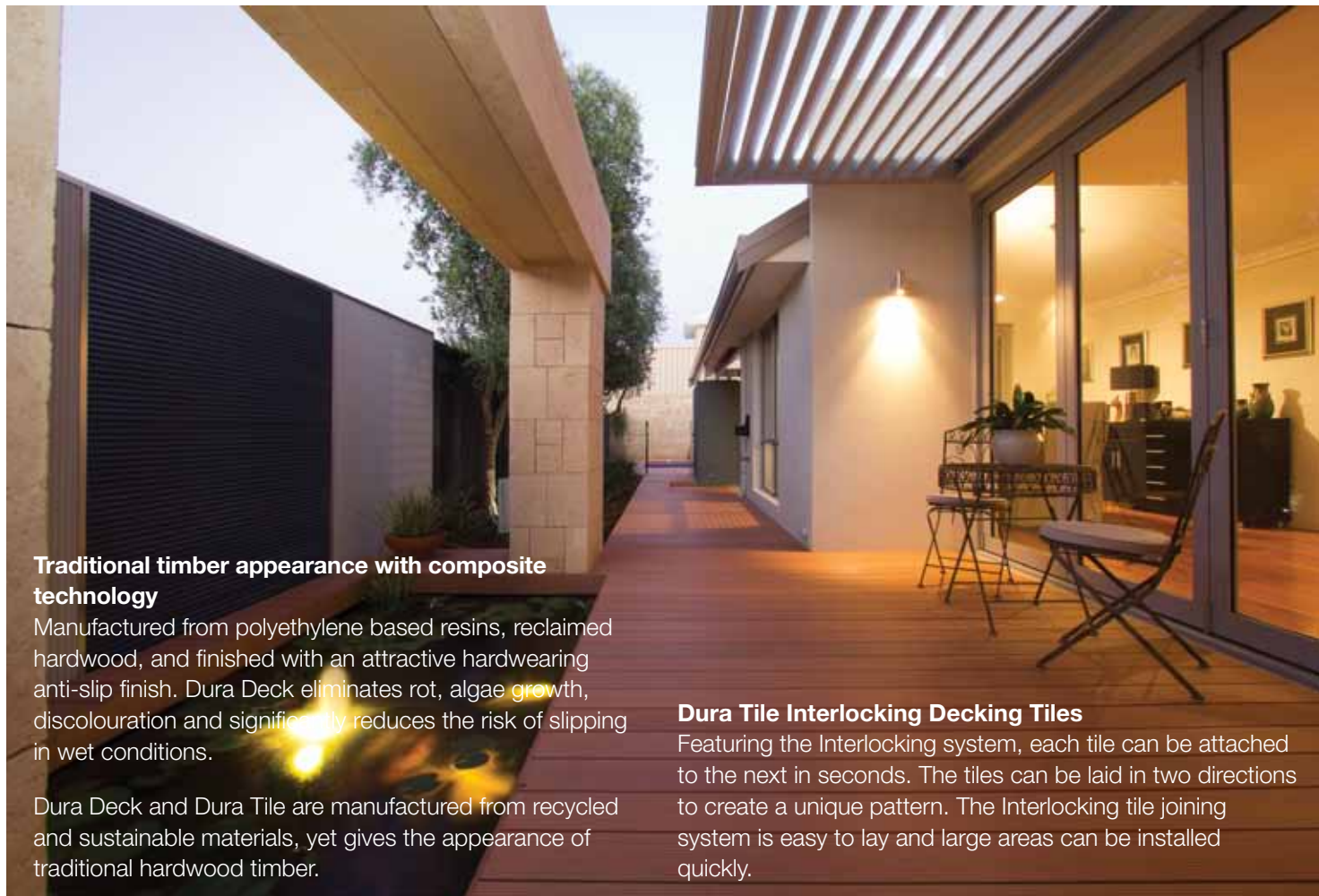
quartered surfaces a zebra-stripe appearance. Zebrano has a coarse texture and a radiant surface finish.

Grades	FAS	Kiln dried				
Density	Durability	Machinability	Moisture Movement	Paint / Finish		
740 kg/m ³	Non durable	Good	Medium	Good		
Size : available 4" and wider						
25mm	32mm	38mm	50mm	63mm	75mm	100mm
✓		✓	✓			

Uses: Cabinet making, doors, panelling and furniture.

Innovative Hardwood Products

Composite Decking and Tiles from Dura Composites



Traditional timber appearance with composite technology

Manufactured from polyethylene based resins, reclaimed hardwood, and finished with an attractive hardwearing anti-slip finish. Dura Deck eliminates rot, algae growth, discolouration and significantly reduces the risk of slipping in wet conditions.

Dura Deck and Dura Tile are manufactured from recycled and sustainable materials, yet gives the appearance of traditional hardwood timber.

Dura Tile Interlocking Decking Tiles

Featuring the Interlocking system, each tile can be attached to the next in seconds. The tiles can be laid in two directions to create a unique pattern. The Interlocking tile joining system is easy to lay and large areas can be installed quickly.

Deck Range			
Plank Width (mm)	Plank Thickness (mm)	Plank Length (mm)	Maximum Span (mm)
295	23	up to 3850	600
225	30	up to 3660	700
145	22	up to 3660	400

Long Lifespan

Dura Deck has an expected lifespan of 50 years+

Features

- Advanced Below Surface Fixings
- Up to 700mm Span
- Anti-slip Surface
- Low Maintenance



Features

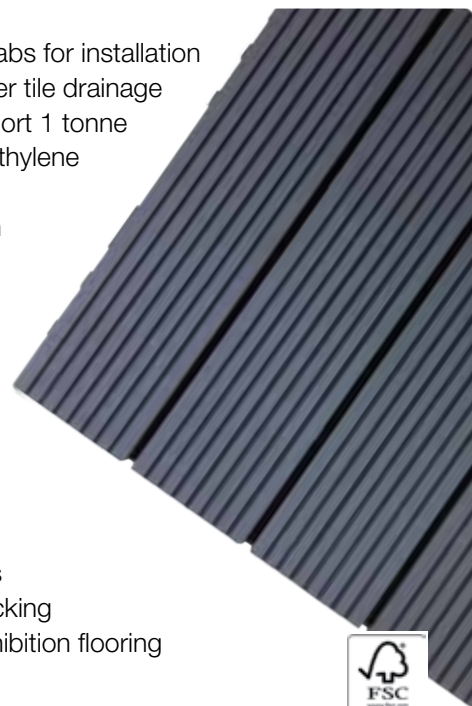
- Inbuilt connecting tabs for installation
- Raised feet for under tile drainage
- Engineered to support 1 tonne
- UV Stabilised polyethylene
- No fixings required
- Symmetrical design

Uses

- Balconies
- Decks
- Roof terraces
- Patios
- Verandahs
- Landscaping
- Conservatories
- Restaurant terraces
- Swimming pool decking
- Showroom and Exhibition flooring

Colour options

Teak  Charcoal 



duraTM
composites

Machining and Bespoke Manufacturing

As the timber experts Arnold Laver has extensive in-house production facilities for the machining and manufacture of both hardwoods and softwoods.

We have modern and well equipped factories located across several of our Depots; allowing us to provide an effective and timely service for a range of manufacturing requirements.

Machining

We are able to machine timber to the exact needs of our customers, usually on a short lead-time; whether it's standard profiles for architrave and skirting, or bespoke components for manufacturing windows and doors.

Cutting

Our range of saws ensures accuracy and flexibility when manufacturing to precise specifications, whilst advanced software helps to provide efficiencies that keep costs under control.

CNC Machining

A Biesse Rover 30 machining centre, together with the latest software, controls the drilling and routing processes for any CNC requirements; delivering accuracy and reliability time after time.

Door servicing

Through our door servicing centres we provide a full design, manufacture and technical support service. We can supply a wide choice of veneers, apertures, glazing and sizes, including fire-rated doors.

Finishing

In 2013 we will be adding a finishing facility that will allow us to offer customers a complete end-to-end service; cutting, machining and applying the spray finish to manufactured timber products.



Arnold Laver

TIMBER

Birmingham*

Dudley Road, Oldbury
West Midlands, B69 3DA
Tel: 0121 552 7788
Fax: 0121 544 7186
sales@birmingham.laver.co.uk

Bradford Manningham*

Manningham Sawmills,
Canal Road, Bradford, BD2 1AR
Tel: 01274 732861
Fax: 01274 737060
sales@bradford.laver.co.uk

Hull*

Crowle Street, Hull, HU9 1RH
Tel: 01482 324525
Fax: 01482 216478
sales@hull.laver.co.uk

Kidderminster*

Firs Trading Estate,
Oldington Lane
Kidderminster, DY11 7QN
Tel: 01562 66557
Fax: 01562 864557

Leeds*

Pontefract Road, Stourton
Leeds, LS10 1SW
Tel: 0113 270 4086
Fax: 0113 272 3833
sales@leeds.laver.co.uk

London*

124 New Road, Rainham
Essex, RM13 8RS
Tel: 01708 529 500
Fax: 01708 529 501
sales@london.laver.co.uk

Manchester*

Timber Terminal, Liverpool Road
Cadishead, Manchester, M44 5BZ
Tel: 0161 777 9000
Fax: 0161 777 9007
sales@manchester.laver.co.uk

North East*

Riverside Sawmills,
Wagonway Road, Hebburn,
Tyne & Wear, NE31 1SP
Tel: 0191 428 6666
Fax: 0191 428 6622
sales@northeast.laver.co.uk

Reading*

Basingstoke Road
Reading, RG2 0QN
Tel: 0118 975 1100
Fax: 0118 975 1900
sales@reading.laver.co.uk

Sheffield Central Call Collect

Little London Road, Heeley
Sheffield, S8 0UH
Tel: 0114 255 7341
Fax: 0114 292 3660
sales@sheffield.laver.co.uk

Sheffield Mosborough*

Olympic Sawmills
Oxclose Park Road North
Sheffield, S20 8GN
Tel 0114 276 4700
Fax 0114 276 4701
sales@sheffield.laver.co.uk

*Depots with full Chain of Custody status