



LightBeton®

Real concrete with unlimited possibilities
for architects, planers and interior designers

The creative surface for walls, ceilings and floorings



... when it matters!





Richter akustik & design offers the most innovative and unique solutions for the architectural and design professions, high-quality furniture manufacturers and the millwork trade. With our experience, our customers can expect sophisticated and economical solutions to their ideas – This is what our highly motivated team of employees strives for!

LightBeton®

Real concrete for attractive and unique interiors



With a surface weight of 3,9 kg/m² (0.79 lbs./sq. ft.) it is lightweight when compared to an actual concrete wall – weight savings of up to 90%!



Available on demand: composite material fire rated according to DIN EN 13501-1.



Easily processed with standard woodworking equipment with no excessive tool wear.



The concrete surface can be used for temporary flooring at trade shows and exhibitions.

Creative innovators and passionate entrepreneurs

Eberhard Richter, Aristidis Tsakuridis and Edmund Ostrowski Development and Production LightBeton®
Richter akustik & design GmbH & Co. KG



LightBeton®

Real concrete (no imitation)
with unlimited possibilities
for interior design

When the 2 mm (0.079") LightBeton is applied to various panels such as plywood, MDF or partical board, to offer just a few examples, the possibilities are unlimited for architechural and design applications, trade shows, retail stores, retail fixtures and cabinets.

Millwork companies can use their automatic edgebander producing what appears to be a solid concrete panel. Carpenters and installers do not have to use any specialty equipment.



)) Retail shops and shop systems

Counters, pedestals, tables, columns/pillars ...



LightBeton®

LightBeton®
Classic grey



Puma Shop at the
MALL in Dubai



Lightweight



Fire protection



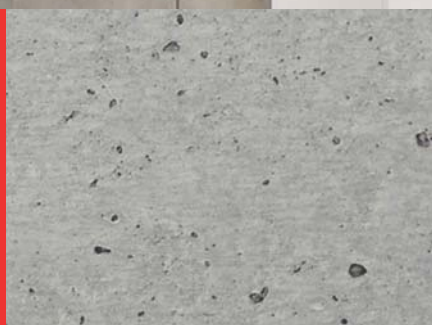
Easy processing

)) Trade show constructions & exhibitions

Wall claddings, room dividers, doors, counters ...



Light**Beton**®
Urban grey



Trade show booth
at the Geneva Motor Show



LightBeton®



Lightweight



Fire protection



Easy processing

)) Bars, Cafés & Restaurants

Room dividers, pillars, backings, counters, pedestals, tables ...

Light**Beton**®
Urban grey
with 5 mm
polypropylene
honeycomb*

Sausalitos
Hamburg



*individually further processed by customer

LightBeton®

LightBeton®
Classic grey

Arcaden
Recklinghausen



Lightweight



Fire protection



Easy processing

) Architecture and living rooms

Wall claddings, room dividers, doors, counters ...

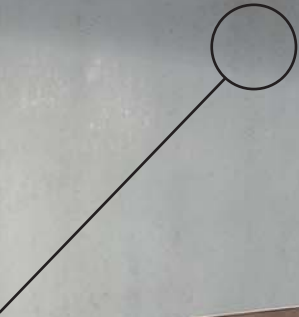
Light **Beton**®
Classic grey



Studio
Wall claddings



LightBeton®



Lightweight



Fire protection



Easy processing

) Architecture and living accommodations

Wall claddings, room dividers, doors ...

Light**Beton**®
Classic grey



Living Areas
Design elements



)) Trade show constructions & exhibitions

Wall claddings, room dividers, doors, counters ...



Light Beton®
Urban grey



Trade show booth – counters,
doors and wall claddings



Lightweight



Fire protection



Easy processing

NEW Material composition with polypropylene honeycomb

A composite of materials made of light honeycomb as a carrier plate with a surface of 2 mm (0.08") LightBeton® reaching a total material thickness of approx. 7 mm (0.275") combined – with a porous surface and formwork patterns.

Material composition MDF

A composite material made of HPL-coated MDF carrier plate (B1) and a covering surface of 2 mm LightBeton® reaching a material thickness of approx. 19 mm (0.748") altogether – with irregular surface holes and the authentic formwork characteristics.



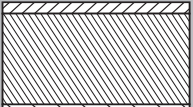
LightBeton®

Standard and custom sized panels
...the solutions for fabrication and design



LightBeton® is suitable for edge-banding machinery and looks authentic with bevels. The corresponding edge is available for any product.

Material composition | Size: 3.020 mm (118.9") x 1.250 mm (49.2")

LightBeton®	2 mm ⁽¹⁾	7 mm ⁽²⁾	19 mm ⁽³⁾
			
Classic grey	●	●	●
Urban grey	●	●	●
Classic white	●	●	●
Classic anthrazit	●	●	●
Formwork System		●*	●*
Floor	●	●	●
Edge material	Edgebanding 3.020x24x2 mm		

(1) Surface layer: 2 mm (0.079") LightBeton® | Backing: fiber glass matrix | Weight: 3,9 kg/m² (0.79 lbs / sq. ft.)

(2) Core: 5 mm (0.197") honeycomb | Concrete layer: 2 mm (0.079") LightBeton® | Weight: 5,6 kg/m² (1.15 lbs / sq. ft.)

(3) Core: 16 mm (0,623") fire rated MDF panel | Concrete layer: 2 mm (0.079") LightBeton® | Backing: 0,8 mm HPL | Weight: 16,4 kg/m² (3.34 lbs / sq. ft.)

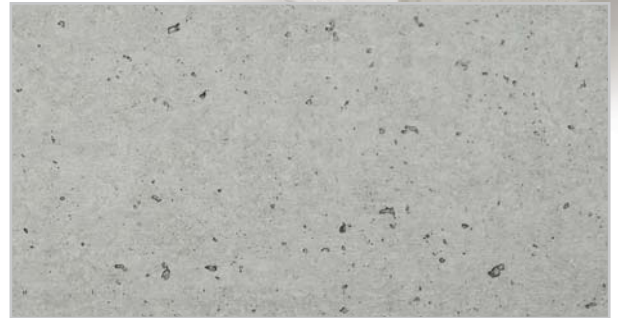
* The Formwork system transfers detailed impressions into the surface of the concrete. Any combination of the listed sizes are available for ordering: 2.000 x 1.200 mm (78.7" x 47.2") | 1.000 x 1.200 mm (39.4" x 47.2") | 600 x 1.200 mm (23.6" x 47.2") | 500 x 1.200 mm (19.7" x 47.2")
Total thickness including MDF carrier (standard).

HINT: Also ask about our prefabricated panels.

Concrete surfaces in 6 different versions with the typical pores.



LightBeton® Classic grey



LightBeton® Urban grey



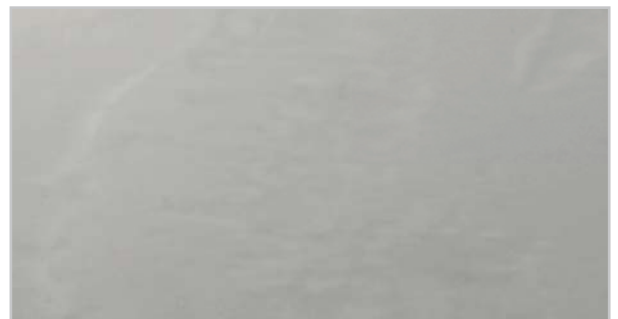
LightBeton® Classic white



LightBeton® Classic anthrazit



LightBeton® Formwork System
transfers detailed impressions into the surface of the concrete



LightBeton® Floor
Concrete in grey with few holes for temporary use as flooring

LightBeton® Repair kit



Surface damages may occur in time due to unforeseen accidents.

With our hand repair kit, deep scratches and holes can easily become nearly invisible. The hard shell case houses an extensive assortment of accessories to easily repair these damages.

Further creative and innovative surfaces:



))) Acoustic-Lightboard

Perfect acoustics and
high fire protection



))) StoneVeneer

The real stone veneer with
a natural surface

LightBeton®

The creative surface for walls, ceilings and floorings

- walls
 - furniture manufacturing
 - tables
 - counters
 - trade show floorings
 - pedestals
 - columns/pillars
- and... and... and...

Service for architects:

It will be our pleasure to
support you with architectural
specifications and data sheets

HINT:

Also ask about our
prefabricated panels.

International distribution –
Manufacturer and Development
Richter akustik & design GmbH & Co. KG
St.-Annener-Str. 117 · 49326 Melle / St. Annen
Tel.: +49 5428 9420-0
Fax: +49 5428 9420-30
www.richter-akustik-design.de
info@richter-akustik-design.de

Distribution for FR, GB, IE, BE, LU
KREOS GmbH & Co.KG
Zeppelinstraße 46 · 88299 Leutkirch
Tel.: +49 7561 985250
Fax: +49 7561 9852529
www.kreos-europe.com
info@kreos-europe.com