

Distributed by

*Arnold Laver*

HD Clad® Pro Slate

HD CLAD® PRO

A **Composite Prime** Product

Wood Grain Composite Cladding System



HD Clad® Pro Cedar Brown

For all enquiries please email:  
**hdclad@laver.co.uk**

**www.laver.co.uk**

*Arnold Laver*



# HD CLAD<sup>®</sup> PRO

Board Dimensions:  
**22 x 136 x 3600mm**



HD Clad Pro<sup>™</sup> provides a **low maintenance, durable alternative to traditional timber cladding** that is available in a range of natural colours. The invisible clip fixings and trims allow for an uncomplicated installation which will transform the exterior of residential and commercial properties alike.

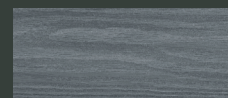
HD Clad Pro<sup>™</sup> composite cladding exclusively uses 100% FSC<sup>®</sup> certified hardwood flour and recycled plastic which combine to produce a high quality product that outperforms traditional timber. The HD Clad Pro<sup>™</sup> system offers matching trims and finishes along with the HD Deck<sup>®</sup> range which features a vast array of complementary composite decking available to complete your project.



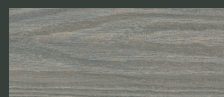
## Available in 4 shades



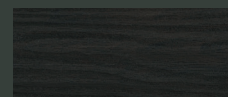
Cedar Brown



Slate



Cedar Grey



Carbon

### Multiple Applications

- Residential
- Commercial
- Industrial
- Modular buildings
- Garden buildings

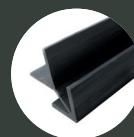
### Low Maintenance & Long Life

- UV stable
- No treating or painting required
- Stain resistant

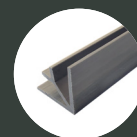
### Complete System

- Easy to install
- Concealed fixings
- Composite trims
- Install horizontally or vertically

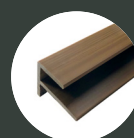
## System Components



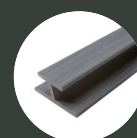
Outside corner trim



Inside corner trim



End trim F-shaped



Joining trim I-shaped



Starter clip



Starter strip



Fixing clip



Spacer button



HD Clad<sup>®</sup> Pro Cedar Grey