

USER GUIDE

Safety Precautions

- Appropriate personal protective equipment should always be worn when handling or working with Atlon MGO boards.
- Always wash hands after handling.
- Always wear appropriate safety goggles and dust mask when fabricating or disposing of Atlon MGO boards



Storage & Safe Handling

- Atlon MGO boards are delivered on solid timber pallets, with each pallet label showing information of board thickness / length / width, and quantity of boards per pallet.
- Atlon MGO boards should be stored horizontally in a cool dry environment and should remain in the original manufacturer's packaging until ready for use. (Figure 1).
- Atlon MGO boards should not be exposed to the weather. If they are allowed to absorb moisture, then they should be given an appropriate amount of time to dry out before installation.
- Atlon MGO boards should be stored on the manufacturer's pallets to ensure sheets remain flat, do not store the boards vertically. (Figure 2).
- Atlon MGO boards should not be stored in close proximity to standing water.
- Atlon MGO boards should not be stacked more than 3 pallets high to avoid the risk of injury.
- Atlon MGO boards should always be carried by a minimum of 2 people during loading or handling. (Figure III)
- Atlon MGO boards should always be handled/carried on its side (by minimum of 2 people). (Figure 3)
- Care should always be taken not to damage the edges or corners of the boards.

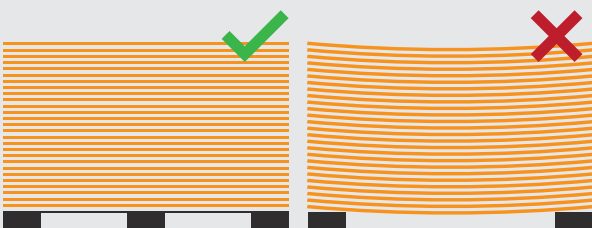


Figure 1.

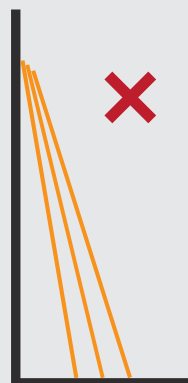


Figure 2.

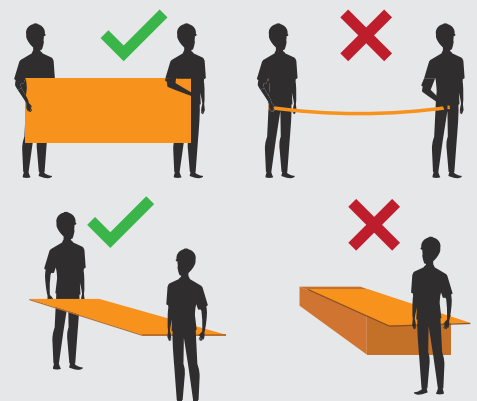


Figure 3.

Cutting

- Atlon MGO boards can be cut using the 'score and snap' method. Simply mark out the desired size using a straight edge and pencil, and then cut along the marker line using a sharp utility knife, making sure to cut through the reinforcing glass fibre mesh. Then using downward pressure on the board it can be snapped along the marker line. Rough edges can be tidied up using a light abrasive.
- Atlon MGO boards can be cut using fine tooth hand or power saws. Always ensure that saws are fitted with an appropriate blade, carbide tipped blades are recommended.
- Cut-outs for electrical outlets, light switches/fixtures, etc can be made by marking out the correct measurements on the smooth side of the board using a straight edge and pencil before cutting out. When using a jigsaw drill a start hole in the corner of the cut-out and start to cut from there. Cut-outs can also be removed using the 'score and snap' method.
- If a rounded cut-out is required then a jigsaw is recommended.
- Ensure that both ends of the boards are supported when cutting.

Fixing Guide – Dry Lining & Fire Walls

- Atlon MGO boards can be fixed to either timber frame or steel frame studwork.
- For general use a maximum of 300mm centres vertically and 600mm centres horizontal. (Figure 4)
- For other applications such as high-performance dry lining and timber frame sheathing, smaller spacings can be used, for example 150mm vertically and 300mm horizontally.

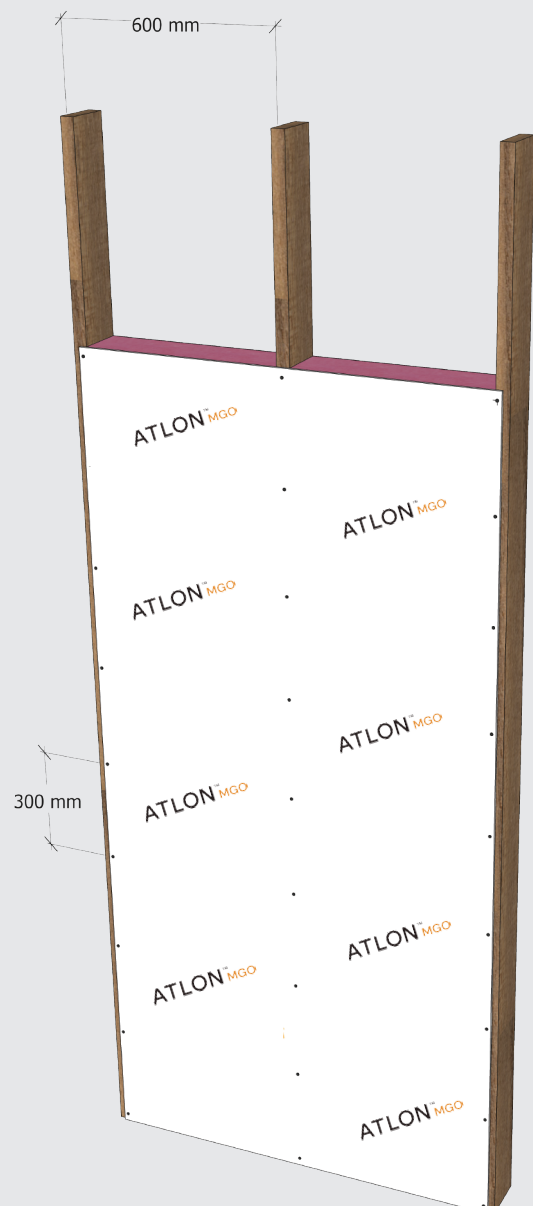


Figure 4.

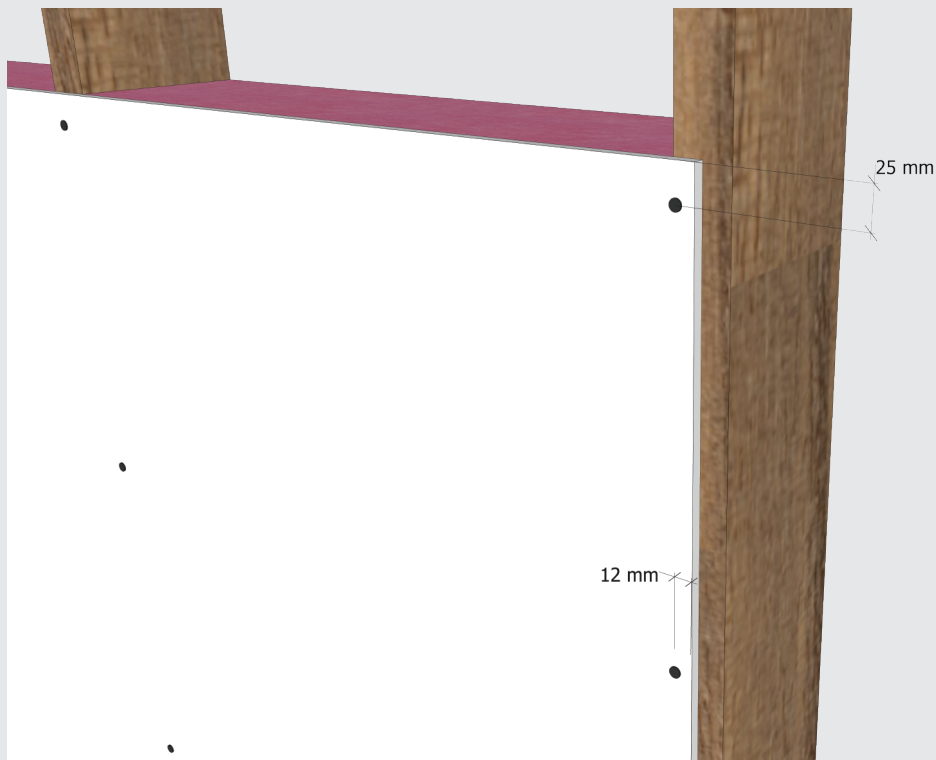


Figure 5.

- Space fixings at least 12mm from the edges of the boards and 25mm from the corners of the boards. (Figure 5)
- When fixing the boards start at the centre and work outwards to avoid any distortion across the board.
- Boards should always be installed in a staggered/offset fashion so that the four corners never meet at one point. (Figure 6)
- For timber frame applications the boards should be installed with a 2mm fitting gap in-between them and a minimum 6mm gap above the finished floor level to allow for settlement of the timber frame structure.
- Butt jointing is only recommended if no settlement of the structure is anticipated.
- Atlon MGO boards should be sealed with an appropriate primer prior to any plastering, papering or painting.
- For applications requiring a fire-resistant wall an appropriate intumescent sealant should be used to seal any joints.
- A suitable breather membrane should be used for sheathing applications.
- Breathable paint is recommended for us with breathable wall applications.

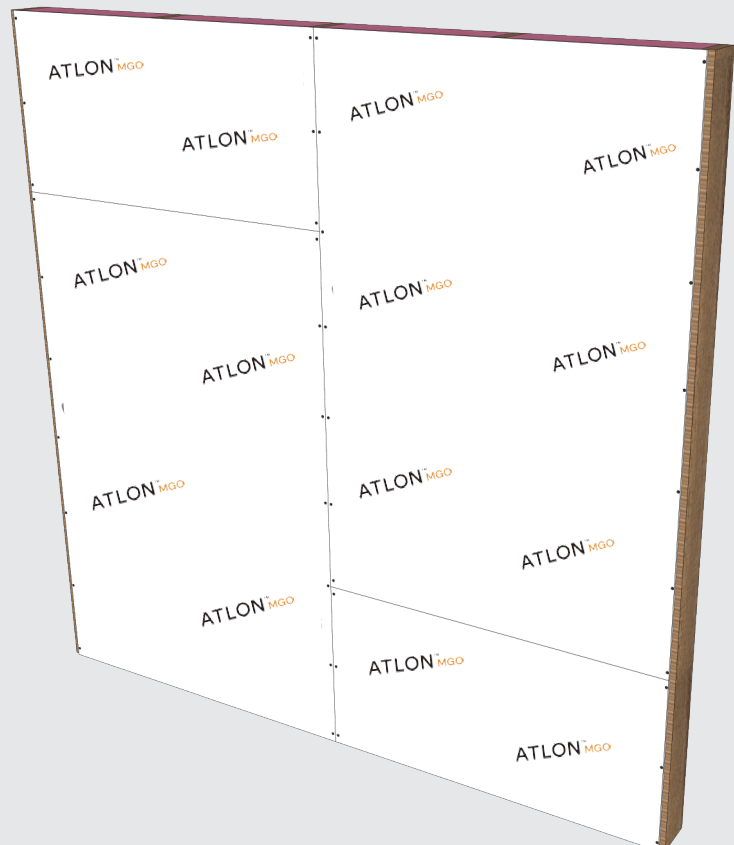


Figure 6.

Finishing Guide

- The top surface of Atlon MGO boards are smooth and ready to be finished once an appropriate primer has been used.
- Once dry and prior to painting or plastering, the joints should be sealed using a suitable flexible sealant. Alkaline resistant jointing tape can also be used.
- Paper tape is not recommended for sealing joints.
- After priming Atlon MGO boards can be painted with either oil based or emulsion paints.
- In applications where installation of objects to the wall (such as shelving) is required, these should be fixed into timber studs or pre-installed noggins.
- For tiling applications, in either walls or floors, these should be sealed with an appropriate primer and cement-based tile adhesive.

Fixings

- Timber Stud: Stainless steel woodscrews, self-tapping with countersunk head.
- Metal Stud: Case-hardened stainless steel screws, self-tapping with countersunk head.
- Timber Frame: Stainless steel woodscrews or nails.

Water Proofing

- When using Atlon MGO boards below or within 150mm of the DPC level then a suitable waterproofing membrane should be used.

Fixing Guide – Floors

- Before installing Atlon MGO over an existing floor always ensure that the subfloor is as flat as possible to ensure a level finish after installation.
- Boards should always be installed in a staggered/offset fashion so that the four corners never meet at one point.
- Atlon MGO boards should not be installed over a wooden subfloor which has moisture present.
- For installation on new subfloors, fix with stainless steel screws or nails at 300mm centres, using a countersunk finish.
- For installation on existing subfloors, apply an even layer of cement based tile adhesive and then fix with stainless steel screws or nails at 300mm centres, using a countersunk finish.
- Always make sure that the joints do not line up with joints in the subfloor.