



**NORclad**<sup>®</sup>  
Part of National Timber Group

# TIMBER CLADDING GUIDE

A vertical strip on the left side of the page showing a close-up of wood grain, likely cedar or larch, with a green border on its left edge.

# CONTENTS

---

**01** INTRODUCTION

---

**02** THE NATIONAL TIMBER  
GROUP BRANDS

---

**03** TIMBER SPECIES OVERVIEW

---

**06** 'BRUNNEA' REDWOOD

---

**09** HARDIE® PLANK / HARDIE®  
VL PLANK BY JAMES HARDIE

---

**12** EUROPEAN LARCH

---

**15** UK & CANADIAN WESTERN  
RED CEDAR

---

**18** UK GROWN LARCH

---

**21** THERMOWOOD

---

**24** ABODO

---

**27** COMPOSITE PRIME  
- HD CLAD® PRO

---

**30** SHOU SUGI BAN®

---

**33** ACCOYA®

---

**36** HARDWOODS

---

**39** FACTORY APPLIED  
COATINGS

---

**41** ABOUT PRESSURE  
TREATMENT

---

**42** ABOUT FIRE TREATMENT

---

**43** HOW TO SPECIFY  
NORclad® TIMBER  
CLADDING & DETAILING

---

**45** CHAIN OF CUSTODY/  
TIMBER CERTIFICATION

---

**46** CONTACT US TODAY





## INTRODUCTION

NORclad® are a cladding solutions company owned by National Timber Group. Being part of NTG allows us access to a national network of resources; including manufacturing sites in Mosborough Mill etc. We now have a much greater industry advantage, as we have the capability to deliver our cladding products on a national scale.

Working closely with Architects, Contractors, Developers and individual Self Builders on a national basis, we provide technical information, advice, and quotation services.

Our raw materials are sustainable, responsibly purchased, and certified with either PEFC/FSC® *reg: C010188 Certified products available on request.*



The mark of  
responsible forestry



Look out for our FSC®  
- certified products.





# THE NATIONAL TIMBER GROUP BRANDS

**Arnold Laver**  
Part of National Timber Group

**SV Timber**  
Part of National Timber Group

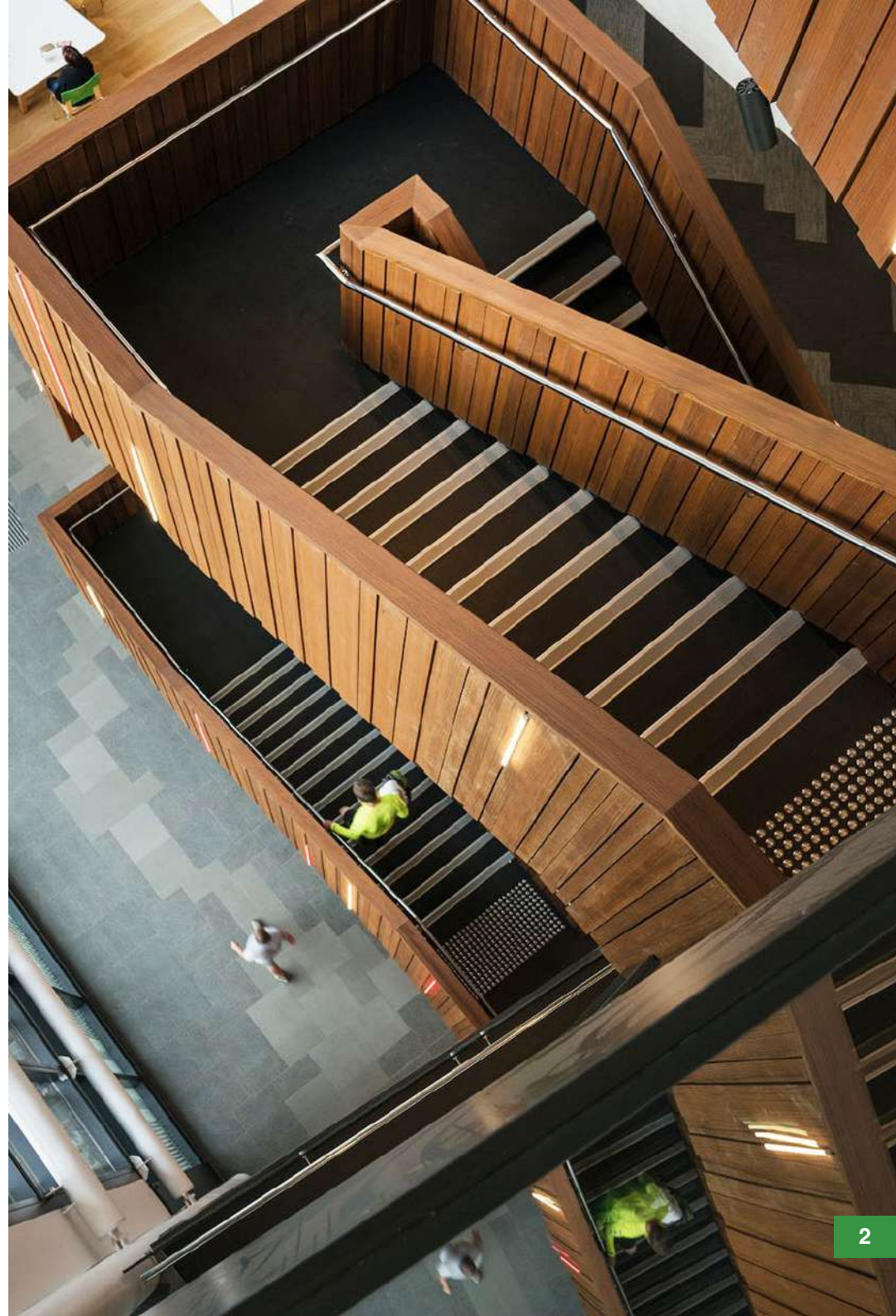
**REMBRANDT**  
**TIMBER**  
Part of National Timber Group

**orchard**  
**timber**  
**products**  
Part of National Timber Group

**Thornbridge**  
**Timber**  
Part of National Timber Group

**NTS**  
**NATIONAL**  
**TIMBER SYSTEMS**  
Part of National Timber Group

**NORclad**<sup>®</sup>  
Part of National Timber Group



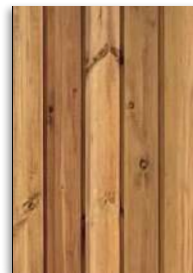


# TIMBER SPECIES OVERVIEW

The varied range of species and products offered by NORclad® will ensure our customers are able to specify and order the cladding most suited to their project requirements.

All the timber species offered come from renewable sources and offer a low carbon footprint when compared with other construction materials.

By speaking to NORclad® and clearly specifying what you want from your cladding, the team will be able to understand the options available and find the right cladding solution for your project.



## 06 'BRUNNEA' REDWOOD

A Scandinavian, Kiln Dried product with a low moisture content and open cell structure makes Redwood an ideal species to pressure treat. When treated with NORclad® Brunnea or NORclad® Lite a warranty can be offered on the product.



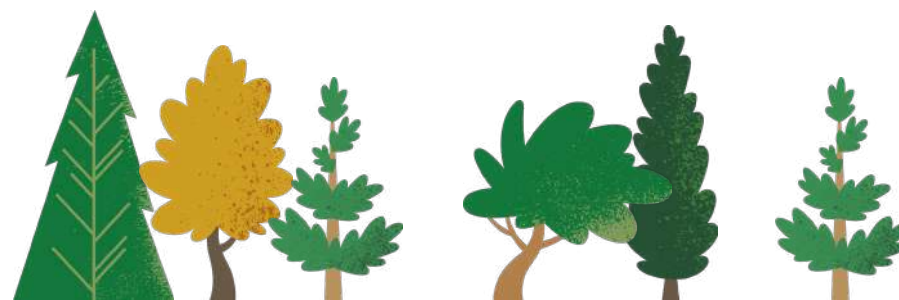
## 09 HARDIE® PLANK / HARDIE® VL PLANK BY JAMES HARDIE

The Hardie® Plank and Hardie® VL Plank fibre cement cladding will stand the test of time, providing an alternative solution to other options such as uPVC or timber. Fibre cement façades protect against fire, moisture, mould, and pests.



## 12 EUROPEAN LARCH

A popular species for timber cladding, slow grown with a distinctive straight grain structure and live inter grown knots. Left uncoated this moderately durable and hardwearing timber will weather down to a silver grey appearance over time.





## 15 UK & CANADIAN WESTERN RED CEDAR

Commercially grown in Canada and the Pacific North West of the USA. A very slow grown timber creates an extremely stable and durable timber. Visually the timber contains very few knots, along with a close fine straight grain and is predominantly a red/brown colour.



## 24 ABODO

A renewable alternative to some of the more traditionally used softwood timbers. FSC® *reg: C010188 Certified products available on request*, engineered to create stable and durable cladding products. The vertical grain construction and Thermal modification process permanently changing the chemical and physical properties of the timber. Also, offered pre-finished with Abodo Protector Oil's in a range of colours.



## 18 UK GROWN LARCH

Homegrown Larch offers different characteristics than imported name sakes, moderately durable and will contain more frequent knots than the imported species – ideal for when the more rustic or traditional timber is required.



## 27 COMPOSITE PRIME - HD CLAD® PRO

Elevate the look of your home and garden with a variety of natural colours that complement your surroundings. Composite Prime – HD Clad® Pro uses wood flour that comes from 100% FSC®, responsibly sourced timber that has reached the end of its life.



## 21 THERMOWOOD

Produced by heat treating Scandinavian pine & spruce to temperatures in excess of 200°C. During this heat treatment, both chemical and structural changes occur within the timber which alter and improve some of its basic characteristics, resulting in a more durable and stable timber.



## 30 SHOU SUGI BAN®

Born from the fires of a traditional Japanese wood charring method, Shou Sugi Ban® timber produces a distinct and unique type of cladding. Create a bespoke finish to your build with handcrafted burnt timber, available in a wide range of finishes. From sleek and modern to fragile-looking, cracked, yet durable – there is a charred cladding option to complete any visual.





### 33 ACCOYA®

Manufactured using a non-toxic treatment and timber sourced from sustainable forests, Accoya® wood has properties that match those of the best tropical hardwoods. A Class 1 Durable Timber, predominately offered pre-coated with a range of film building options.



### 36 HARDWOODS

British Sweet Chestnut, and European Oak are both popular options, often finger-jointed to cut out defects and offer a more usable length, less common than softwood species for cladding, but for the right project, a Hardwood cladding can be just what is required.



### 39 FACTORY APPLIED COATINGS

Working with some of the leading paint manufacturers in the field, NORclad® offer factory-painted timbers, including Accoya® and Thermowood. In a quality controlled environment which is quick and efficient, ensuring consistent quality throughout the order, offering significant saving in time, labour, and money VS on site application.





# 'BRUNNEA' REDWOOD



European Redwood is a very popular specie for timber cladding, this specie is also known as Scots Pine. European Redwood is a well known specie which is imported from Scandinavia.



Private Project

## NORclad® 'BRUNNEA' REDWOOD A+

1. PEFC/FSC® reg: C010188 Certified products available on request, sustainably sourced Timber
2. Imported from Scandinavia
3. Selected boards for a very low number of knots
4. All timber is sourced and machined to CE Quality Grading Requirements
5. Available lengths from 2.1 – 4.8m+ (common lengths 3.9, 4.2, 4.8m)
6. Max live knot diameter on face: 18mm. 1 knot per metre on average over a 4.5m length

## NORclad® 'BRUNNEA' REDWOOD A

1. PEFC/FSC® reg: C010188 Certified products available on request, sustainably sourced Timber
2. Imported from Scandinavia
3. All timber is sourced and machined to CE Quality Grading Requirements
4. Available lengths from 2.1 – 4.8m+ (common lengths 3.9, 4.2, 4.8m)
5. Max live knot diameter: 40mm. along the length of timber

## NORclad® 'BRUNNEA' REDWOOD B

1. PEFC/FSC® reg: C010188 Certified products available on request, sustainably sourced Timber
2. Imported from Scandinavia
3. All timber is sourced and machined to CE Quality Grading Requirements
4. Available lengths from 2.1 – 4.8m+ (common lengths 3.9, 4.2, 4.8m)
5. Max live knot diameter: 60mm along the length of timber



# DETAILED INFORMATION

## 'BRUNNEA' REDWOOD



### Wood Type

Softwood.



### Origin

Europe.



### Durability

Moderately durable.



### Typical Lengths

2.4m – 5.1m.



### Density

510 kg/m<sup>3</sup> at 16-18% moisture content.



### Dimensional stability

Moderate.



### Typical section sizes

Ex 25, 32, 50, 75, 100mm x 25, 50, 75, 100, 125, 150, 175, 200mm.



### Typical End Uses

Widely used in both Cladding and Decking scenarios.



### Fixings

Stainless steel fixings are always recommended.



### Strength & working properties

For its weight, the timber is strong and moderately hard, Redwood machines well, allowing a nice smooth finish.



### Quality

NORclad® typically offer European Redwood in A, or A+ Grade, a B Grade product is available for lower specification projects.



### Sustainability

From responsible sources – FSC® reg: C010188 Certified products available on request and/or PEFC timber.



### Colour

The sapwood is creamy-white to yellow in colour, the heartwood is pale yellow-brown to red-brown, resinous, and usually distinct from the sapwood.

# 'BRUNNEA' REDWOOD

## TREATMENTS

Treatments can be applied to various cladding species to enhance or alter their colour or give them long term protection against the elements.

### **NORclad® BRUNNEA**

NORclad® Brunea provides a 30 year warranty against rot & fungal decay. The treatment process enables the timber to hold colour longer, requiring little or no maintenance.

### **NORclad LITE**

NORclad® Lite offers a 30 year warranty against rot and fungal decay. This treatment does not contain a pigment and therefore upon exposure to UV light the colour will enrich before beginning to naturally weather to a silver/ grey over time. With little or no maintenance required long term the NORclad® Lite treatment is a great peace of mind option over having untreated softwood timber cladding.

## PROFILES



NWC1



NWC2



NWC3



NWC4



NWC5



PSE



NWCC1



NWFE2



NWS1





## HARDIE® PLANK / HARDIE® VL PLANK BY JAMES HARDIE



James Hardie fibre cement products are built to last. It's the go to façade for builders, homeowners and architects worldwide. Hardie® Plank and Hardie® VL Plank cladding creates a classic finish for any home and convinces with a high-quality finish.



*Burridge Road Southampton*

A2 is fire-rated for your safety, and this is just one of our many quality features. Our planks are so long-lasting, we give you a 15-year warranty!

While real wood regularly needs to be sanded down and re-painted, Hardie® Plank and Hardie® VL Plank are much easier to maintain while giving you the same rustic look we love about wood.

Fibre cement is long-lasting and uncomplicated: thanks to its low-maintenance ColourPlus™ technology, your façade will be durable for years to come.

If you love a classic look and a low-maintenance façade, Hardie® Plank is the right choice for you. Installed at least 20% faster compared to competitor products and incredibly versatile: you can choose from 21 colours, two textures in plank, and 8 colours in Hardie® VL Plank, with a range of ways to install them.

Discover Hardie® Plank and find the perfect fit for you and your home.

# DETAILED INFORMATION

HARDIE® PLANK / HARDIE® VL PLANK BY JAMES HARDIE



## Durability

The product won't rot, warp, crack or peel.



## Installation Styles

Create a classic finish with Hardie® Plank boards in horizontal lap, vertical hit and miss or open joint styles.



## Availability

In stock for immediate dispatch across England.



## Anti-fungal

Naturally resistant to mould and fungus, the number one cause of rot and decay in traditional timber.



## Complete system

Easy to install with concealed fixings and matching composite trims. Ability to install horizontally or vertically.



## BBA Certified

Hardie® cladding has been assessed by the British Board of Agrément and has been awarded BBA certificate number 04/4147



## Length

Cladding and trims offered in 3.6m lengths as standard.



## Colour

Hardie® Plank is offered in 21 different colours, and Hardie® VL Plank is available in 8 colours.



## Quick Installation

At least 20% faster installation.



## Multiple applications

Suitable for residential, commercial, and industrial applications, modular buildings and garden buildings.



## Low maintenance

Low maintenance thanks to our unique ColourPlus(TM) Technology finishes, our multi-coat, baked-on finish that gives a durable, fade-resistant finish that lasts for years to come.





# HARDIE® PLANK / HARDIE® VL PLANK BY JAMES HARDIE

## TREATMENTS

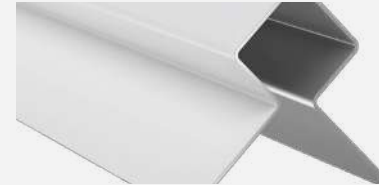
The Hardie® Plank and Hardie® VL Plank fibre cement cladding will stand the test of time, providing an alternative to solutions such as uPVC or timber. Fibre cement façades protect against fire, moisture, mould, and pests. Conversely, uPVC cladding is prone to colour fade and becomes brittle over time, whilst timber may not always be an appropriate option.

Choosing the right cladding for your home is an important decision, with each cladding type offering a variety of options in texture, colour, size, finish, and installation method. Ultimately, the choice of façade material may be decided by a number of considerations.

Hardie® Plank range will not ignite when exposed to direct flame or extreme heat; it is non-combustible with a fire classification of A2-s1, d0 – the highest possible fire rating for a coloured façade board.

## PROFILES

### HARDIE® PLANK:



EXTERNAL CORNER TRIM



INTERNAL CORNER TRIM



TOP VENTILATION STRIP



STARTER STRIP & VENTILATION

### HARDIE® VL PLANK:



ABUTMENT



EXTERNAL TRIMS CORNER



WINDOW HEAD & VERTICAL  
STARTER TRIM



EXTERNAL CORNER TRIM

# EUROPEAN LARCH



European larch timber cladding is a moderately durable timber. It is a slow grown high density, softwood with a colour that ranges from a light straw yellow to a gold/brown. European larch is a popular, cost effective species of coniferous softwood.



Bristol Bears

## EUROPEAN LARCH A

1. FSC® reg: C010188 Certified products available on request, sustainably sourced Timber
2. All timber is sourced and machined to CE Quality Grading Requirements
3. Kiln Dried to 14-20% Moisture content
4. Typical lengths 3.0m - 5.7m
5. Average knot diameter: 40mm. Commonly referred to as Unsorted (Grade I-III)

## EUROPEAN LARCH B

1. FSC® reg: C010188 Certified products available on request, sustainably sourced Timber
2. All timber is sourced and machined to CE Quality Grading Requirements
3. Kiln Dried to 14-20% Moisture content
4. Typically 3.0m - 5.7m lengths
5. Average knot diameter: 60mm. Commonly referred to as Sawfalling (Grade I-IV)



# DETAILED INFORMATION

## EUROPEAN LARCH



### Wood Type

Softwood.



### Colour

Varies from pale yellow to orange to golden brown.



### Durability

Moderately durable.



### Typical Lengths

2.4m – 4.0m.



### Density

590-650 kg per m3 at 14% moisture content.



### Dimensional stability

It has a tendency to distort when wet or not dried, but once dry, is generally stable.



### Typical section sizes

Ex 25, 32, 50, 75mm x 25, 50, 75, 100, 125, 150, 175mm.



### Typical End Uses

Widely used in both Cladding and Decking scenarios.



### Fixings

Stainless steel fixings are always recommended.



### Strength

It is one of the hardest and strongest commercial softwoods available.



### Quality

NORclad® typically offer Larch in A, or B Grade.



### Sustainability

Sourced from well managed forests – FSC® reg: C010188 Certified products available on request.

# EUROPEAN LARCH

## TREATMENTS

Treatments can be applied to various cladding species to enhance or alter their colour or give them long term protection against the elements.

### **NORclad® BRUNNEA**

NORclad® Brunea provides a 30 year warranty against rot & fungal decay. The treatment process enables the timber to hold colour longer, requiring little or no maintenance.

### **NORclad® LITE**

NORclad® Lite offers a 30 year warranty against rot and fungal decay. This treatment does not contain a pigment and therefore upon exposure to UV light the colour will enrich before beginning to naturally weather to a silver/ grey over time. With little or no maintenance required long term the NORclad® Lite treatment is a great peace of mind option over having untreated softwood timber cladding.

## PROFILES



NWC1



NWC2



NWC3



NWC4



NWC5



PSE



NWCC1



NWFE2



NWS1

*Eased or rounded edges are required if coatings are to be applied to above profiles*



# UK & CANADIAN WESTERN RED CEDAR



Canadian Western Red Cedar is a durable softwood, slow grown, naturally durable, stable, light weight and has a natural beauty and warmth complemented by a uniform fine grain. UK Grown Cedar will contain more frequent, and larger knots than its Canadian namesake.



Churchwood

## CANADIAN WRC CLEAR & BETTER

1. PEFC, sustainably sourced Timber
2. Imported from Canada
3. All timber is sourced and machined to CE Quality Grading Requirements
4. Max live knot diameter on face: 19mm. Limited along the length of timber
5. Many boards supplied are clear boards

## CANADIAN WRC CLEAR & BETTER 15% 4 CLEAR

1. PEFC, sustainably sourced Timber
2. Imported from Canada
3. All timber is sourced and machined to CE Quality Grading Requirements
4. Max live knot diameter on face: 38mm. Limited along the length of timber
5. Many boards supplied are clear boards
6. Including a percentage of boards graded to No. 4 Clear, the majority meeting No. 2 Clear

## UK - CLADDING GRADE

1. Can be offered PEFC/FSC® reg: C010188 Certified products available on request
2. Grown around the United Kingdom
3. All timber is sourced and machined to CE quality Grading Requirements.
4. Frequent knots and visible grain

# DETAILED INFORMATION

## UK & CANADIAN WESTERN RED CEDAR



### Wood Type

Softwood.



### Typical Lengths

1.828m (6ft) – 4.88m (16ft).



### Typical section sizes

Ex 22, 32, 50, 75mm x 22, 50, 75, 100, 125, 150, 175mm.



### Strength & working properties

As it is a soft timber it can be more prone to physical damage in terms of splitting and indentation/bruising, care should be taken.



### Colour

Salmon pink sapwood to dark brown Heartwood – If left unprotected, it will turn to a silver/grey colour.



### Origin

Canadian – North America and Western Canada.

UK - Commercially grown around the UK.



### Density

390 kg per m<sup>3</sup> at 16% Moisture Content.



### Typical End Uses

Cladding, Brise Soleil systems, Shingles & Decking.



### Quality

Canadian – Imported as No.2 Clear and Better and No 4 Clear and Better.

UK - Cladding Grade - frequent and large knots throughout the grade.



### Chemical Properties

This specie has natural preservatives which can have a corrosive effect on some unprotected metals, causing a black stain on the wood.



### Durability

Canadian – durable, high resistance to decay.

UK - Moderately durable timber, recommended to treat with NORclad® Lite, or Brunnea preservative.



### Dimensional stability

Canadian – It has a very low shrinkage factor and is superior to all other coniferous woods in its resistance to warping, twisting and checking.

UK - Medium moisture movement, potential for splitting due to higher knot content



### Fixings

Stainless steel fixings are always recommended.



### Sustainability

Sourced from well managed forests – FSC® reg: C010188 Certified products available on request and/or PEFC timber.



# UK & CANADIAN WESTERN RED CEDAR

## TREATMENTS

Treatments can be applied to various cladding species to enhance or alter their colour or give them long term protection against the elements.

### **NORclad® BRUNNEA**

NORclad® Brunea provides a 30 year warranty against rot & fungal decay. The treatment process enables the timber to hold colour longer, requiring little or no maintenance.

### **NORclad® LITE**

NORclad® Lite offers a 30 year warranty against rot and fungal decay. This treatment does not contain a pigment and therefore upon exposure to UV light the colour will enrich before beginning to naturally weather to a silver/ grey over time. With little or no maintenance required long term the NORclad® Lite treatment is a great peace of mind option over having untreated softwood timber cladding.

## PROFILES



NWC1



NWC2



NWC3



NWC4



NWC5



PSE



NWCC1



NWSN1 (Canadian only)



NWSN2 (Canadian only)

*Eased or rounded edges are required if coatings are to be applied to above profiles*

# UK GROWN LARCH



British Larch is an indigenous species which grow in various parts of Britain giving an improved carbon footprint to local projects and developments.

## NORclad® SUPPLY UK GROWN LARCH CLADDING

1. FSC® reg: C010188 Certified products available on request, sustainably sourced Timber
2. Grown within the United Kingdom
3. All timber is sourced and machined to CE Quality Grading Requirements
4. Faster grown than imported species, large and frequent knots along the length



Weathered



# DETAILED INFORMATION

## UK GROWN LARCH



### Wood Type

Softwood.



### Origin

UK.



### Durability

Moderately durable.



### Typical Lengths

2.4m – 4.8m.



### Density

550 kg per m<sup>3</sup> at 18% moisture content.



### Dimensional stability

It has a tendency to distort when wet or not dried, but once dry, is generally stable.



### Typical section sizes

Ex 25, 32, 50, 75mm x 25, 50, 75, 100, 125, 150, 175mm.



### Typical End Uses

Widely used in both Cladding and Decking scenarios.



### Fixings

Stainless steel fixings are always recommended.



### Strength & working properties

Moderately durable locally grown timbers, significantly higher knot content than their imported counterparts due to growth rates in our warmer climate, with a lower carbon footprint.



### Quality

Joinery and Structural.



### Colour

A pale red/brown.



### Sustainability

Sourced from well managed forests – FSC® reg: C010188 Certified products available on request.

# UK LARCH

## TREATMENTS

Treatments can be applied to various cladding species to enhance or alter their colour or give them long term protection against the elements.

### **NORclad® BRUNNEA**

NORclad® Brunea provides a 30 year warranty against rot & fungal decay. The treatment process enables the timber to hold colour longer, requiring little or no maintenance.

### **NORclad® LITE**

NORclad® Lite offers a 30 year warranty against rot and fungal decay. This treatment does not contain a pigment and therefore upon exposure to UV light the colour will enrich before beginning to naturally weather to a silver/grey over time. With little or no maintenance required long term the NORclad® Lite treatment is a great peace of mind option over having untreated softwood timber cladding.

## PROFILES



NWC1



NWC2



NWC3



NWC4



NWC5



PSE



NWCC1



NWFE2



NWS1



# THERMOWOOD



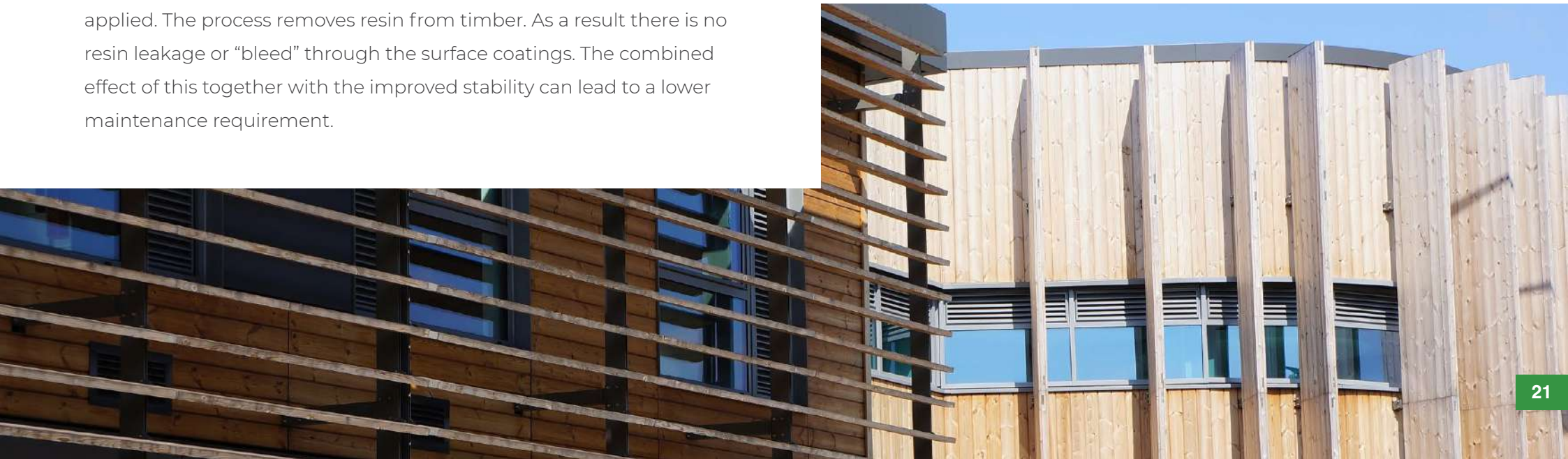
ThermoWood is produced by heat treating Finnish grown European Redwood/Whitewood (Scandinavian Pine/Spruce) to temperatures in excess of 200 degrees Centigrade. During heat treatment, chemical and structural changes occur within the timber which alter and improve some of its basic characteristics.

As a result of the treatment, the resulting environmentally-friendly ThermoWood is created. Its colour darkens, it is more stable than normal wood in conditions of changing humidity and its thermal insulation properties are improved, ideal for use in exposed areas such as External Timber Cladding. The heat treatment process enables the use of Scandinavian Redwood in areas requiring a service life of up to 30 years without the need for any further preservative or coating to be applied. The process removes resin from timber. As a result there is no resin leakage or “bleed” through the surface coatings. The combined effect of this together with the improved stability can lead to a lower maintenance requirement.

## NORclad® SUPPLY THERMOWOOD D

All grading information is given as general guidance, to meet the criteria set through CE marking, quality and grading requirements.

1. PEFC Certified, sustainably sourced Timber
2. Imported from Scandinavia
3. All timber is sourced and machined to CE Quality Grading Requirements
4. Thermally Modified to 6% Moisture content
5. Typically 2.4m+ lengths
6. Frequent knots, creating character and variation from one board to the next



# DETAILED INFORMATION

## THERMOWOOD



### Wood Type

Softwood.



### Origin

Finland.



### Durability

Durable.



### Typical Lengths

2.4m +



### Density

350 - 480kg/m<sup>3</sup> when moisture content is 6%.



### Dimensional stability

Thermal modification increases stability.



### Typical section sizes

Ex 25, 32mm x 50, 75, 100, 125, 150mm.



### Typical End Uses

External Cladding.



### Fixings

Stainless steel fixings are always recommended.



### Strength & working properties

Thermal modification gives increased durability and stability - ideal for external cladding both coated, and uncoated.



### Quality

NORclad® typically offer Thermowood D.



### Sustainability

Sourced from well managed forests – PEFC certified.



### Colour

Medium/dark brown.



# THERMOWOOD

## TREATMENTS & COATINGS

Treatments can be applied to various cladding species to enhance or alter their colour or give them long term protection against the elements.

### **NORclad® BRUNNEA**

NORclad® Brunea provides a 30 year warranty against rot & fungal decay. The treatment process enables the timber to hold colour longer, requiring little or no maintenance.

### **NORclad® LITE**

NORclad® Lite offers a 30 year warranty against rot and fungal decay. This treatment does not contain a pigment and therefore upon exposure to UV light the colour will enrich before beginning to naturally weather to a silver/ grey over time. With little or no maintenance required long term the NORclad® Lite treatment is a great peace of mind option over having untreated softwood timber cladding.

## PROFILES



NWC1



NWC2



NWC3



NWC4



NWC5



PSE



NWCC1



NWSN1



NWSN2

*Eased or rounded edges are required if coatings are to be applied to above profiles*

# ABODO



Abodo produce a range of FSC® reg: C010188  
*Certified products available on request* sustainable  
timber products; super stable thermally modified  
plantation timber with Vulcan Cladding, in both  
Flat Sawn and Laminated options.



Comiskey House



# DETAILED INFORMATION

## ABODO

The Vulcan Cladding range offers a renewable alternative to some of the more traditional Larch or Cedar cladding that the construction market are used to. FSC® reg: C010188 Certified products available on request, plantation timber is selected before being engineered to create a stable and durable wood cladding product, a key feature of the product is the patented vertical grain construction. This combined with the Thermal modification process permanently changes both the chemical, and physical properties of the timber.

The increased stability offered from the vertical grain construction allows the use of much wider boards than a standard non-engineered product. This allows the option to secret-fix Vulcan cladding, reducing the risk of moisture penetrating the boards and allowing the possibility of failures.

Vulcan is supplied pre-finished with Abodo Protector Oil, offered in a range of colours this a plant based exterior oil penetrates into the timber.



Comiskey House

## COLOURS



Vulcan  
Ebony



Vulcan  
Walnut



Vulcan  
Graphite



Vulcan  
Manuka



Vulcan  
Teak



Vulcan  
Patina



Vulcan  
Straw

## PROFILES



Hector WB10 (145x20)



Hector WB10 (180x20)



Zara WB12 (180x20)



Zara WB12F (180x20)



Zara WB12 (138x20)



Zara WB12 (90x60)



Zara WB12 (90x40)



## COMPOSITE PRIME - HD CLAD® PRO



HD Clad® Pro provides a low-maintenance, durable alternative to traditional timber cladding that is available in a range of four natural colours.



Private House

HD Clad® Pro is a wood grain, composite cladding system that offers long-lasting, low-maintenance natural facades for handsome exteriors.

Elevate the look of your home and garden with a variety of natural colours that complement your surroundings. The Composite Prime product uses wood flour that comes from 100% FSC® reg: C010188 Certified products available on request, responsibly sourced timber that has reached the end of its life.

HD Clad® Pro is suitable for both commercial and residential properties. Its unique properties include:

- Easy installation
- Capped wood grain finish
- True Grain Colour System™
- Will not warp, bend or splinter
- Matching trims
- Mixed use application





# DETAILED INFORMATION

## COMPOSITE PRIME – HD CLAD® PRO



### Length

Cladding and trims offered in 3.6m lengths as standard.



### Anti-fungal

Naturally resistant to mould and fungus, the number one cause of rot and decay in traditional timber.



### Low maintenance

Maintaining its aesthetic appeal years after installation, HD Clad® Pro requires no staining, treatment, or painting.



### Multiple applications

Suitable for residential, commercial, and industrial applications, modular buildings, and garden buildings.



### Complete system

Easy to install with concealed fixings and matching composite trims. Ability to install horizontally or vertically.



### Availability

In stock for immediate dispatch across England.



### Colours

Offered in 4 colours: cedar brown, cedar gray, slate, and carbon.



### Durability

HD Clad® Pro will not warp, bend, or splinter like traditional timber cladding. Rot and decay are a thing of the past.



### FSC® 100% timber

Our wood flour used is FSC® reg: C010188 Certified products available on request, timber from responsible sources.



# COMPOSITE PRIME - HD CLAD® PRO

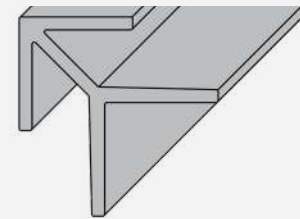
## TREATMENTS

At Composite Prime, we start the process by testing each batch of raw materials to ensure they meet our stringent quality control parameters. Using the latest technology in our state-of-the-art factory, we blend the components together to create a finished product that's engineered to perform. We test and inspect every production batch to ensure that it meets our specification criteria before we clean and package it. The end result is our guaranteed quality product, designed to last.

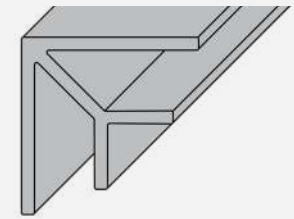
HD Clad® Pro is a wood grain, composite cladding system that offers long-lasting, low-maintenance natural façades for handsome exteriors. Enhance and transform your home and garden by choosing from a range of natural colours, designed to suit your environment.

HD Clad® Pro uses exclusively FSC® reg: C010188 Certified products available on request, hardwood flour and recycled plastic which combine to produce a high-quality finish and exceptional durability that outperforms traditional timber.

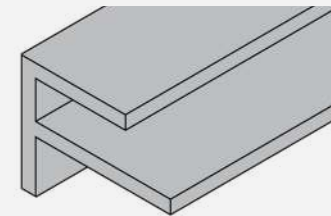
## PROFILES



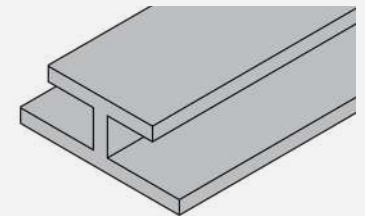
OUTSIDE CORNER TRIM



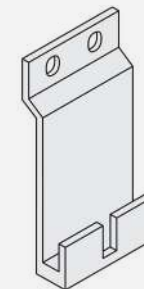
INSIDE CORNER TRIM



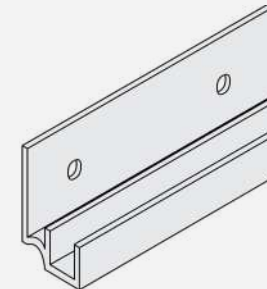
END TRIM F-SHAPED



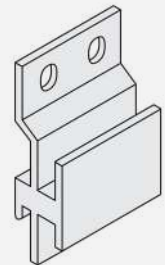
JOINING TRIM I-SHAPED



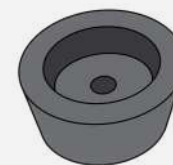
STARTER CLIP



STARTER STRIP



FIXING CLIP



PACKER BUTTON





## SHOU SUGI BAN®



Durable, unique cladding that adds a timeless finish to your façade. Whether your structure is old or new, this darkly coloured burnt timber product creates a mature, striking visual for your build.





# DETAILED INFORMATION

## SHOU SUGI BAN®

Our Shou Sugi Ban® cladding is crafted through a controlled application of the volatile process of Yakisugi – a traditional Japanese timber charring technique.

This process alters the cell structure of the timber, naturally preserving and protecting it. It also minimises the need for maintenance, increasing the timber's durability against fire, weathering, and pests.

The result is a beautiful and tactful finish that adds uniqueness to builds both historic and contemporary, for interior and exterior use.

Shou Sugi Ban® is an art, with finishes and textures that align it to any façade. It can range from traditional, burnt, and delicate-looking – to sleek, smooth, and modern. Styles include intense, cracked, black finishes; soft or heavy brushing to create a subtle or exaggerated grain; and smoother contemporary options.

Create a bespoke, original look for your façade with sustainably sourced, hand-crafted, charred timber cladding products.



Private House



# SHOU SUGI BAN® COLOURS

**PROFILES** AVAILABLE  
ON REQUEST



Accoya® Dorai



Accoya® Tobu



Accoya® Sora



Accoya® Graphite



Accoya® Mizu



Accoya® Anthracite



Accoya® Charred



Accoya® Light Brush



Accoya® Tenki



Douglas Fir Orenji



Douglas Fir Shedo



Douglas Fir Rozu



Douglas Fir Mobu



Douglas Fir Kuro



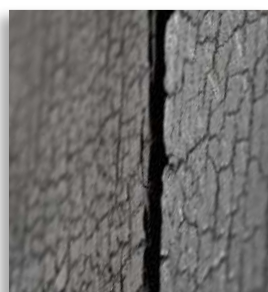
Douglas Fir Kiji



Douglas Fir Ao



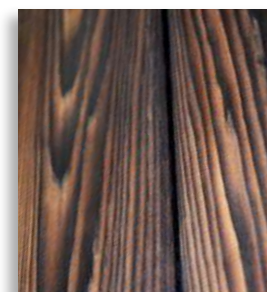
Douglas Fir Ki



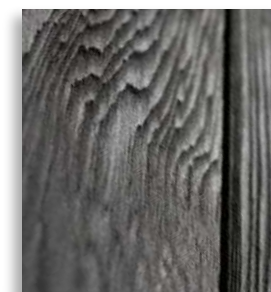
Oak Honshu



Oak Hokkaido



Cedar Brushed Flat  
Sawn Light



Cedar Brushed Flat  
Sawn Dark





## ACCOYA®



Accoya® wood is the result of decades of research and development that has brought together long-established and extensively proven wood modification technique – acetylation – and lead-edge patented technology to create a high performance wood ideal for timber cladding.



*Dartford Rugby Club*



# DETAILED INFORMATION

ACCOYA®

Accoya® high performance wood is suitable for wooden cladding and façades where aesthetics, less frequent maintenance, dimensional stability, durability and insulation value are key factors. Accoya's® versatility makes it ideal for use in residential, commercial and industrial structures.

Manufactured using a non-toxic treatment and timber sourced from sustainable forests, Accoya® wood has properties that match those of the best tropical hardwoods.

Every batch of Accoya® wood is tested after production to ensure that its durability can be guaranteed.

Take a look at just some of the benefits:

- 01.** Accoya® wood is modified all the way through, not just at the surface.
- 02.** Coating maintenance intervals can be expected to be twice as long on Accoya® wood.
- 03.** Thermal conductivity is improved in comparison with softwoods and hardwoods.



## Sustainability

By significantly enhancing the durability and dimensional stability of fast growing, abundantly available certified wood species, Accoya® wood provides compelling environmental advantages over scarce slow growing hardwoods, woods treated with toxic chemicals, and non-renewable carbon-intensive materials such as plastics, steel and concrete. Accoya® has been certified at the C2C Gold level since 2010, as the only structural building material around. A large benefit of C2C certification is that, especially at the higher certification levels (Gold & Platinum) it contributes to several credits in recognised Green Building Schemes such as LEED and BREEAM.

At end-of-use, Accoya® provides no challenges whatsoever. It can be treated similar to untreated wood and thus can be re- or upcycled in various ways.

- Always sustainably sourced from abundantly available, often fast growing wood species
- Use phase advantages: increased life span, less maintenance, superior thermal insulation
- Non toxic and 100% recyclable – a perfect fit with the bio-cycle of the C2C philosophy
- CO<sub>2</sub> negative over the full life cycle



## Durability

Accoya® wood's durability (resistance to rot) is Class 1, matching and even exceeding the performance of nature's most durable woods such as Oak, Teak, Iroko and Sapele. Every batch of Accoya® wood is tested after production to ensure that its durability can be guaranteed.

- Class 1 durability – facilitating a longer life span
- Lasting 50 years above ground



## Strength & working properties

Significantly enhancing the dimensional stability of Accoya® wood provides compelling environmental advantages over slow-growing hardwoods (which are often unsustainably sourced) and non-renewable carbon-intensive materials such as plastic, steel and concrete.

Properties of Accoya® wood match, or even exceed those of the best tropical hardwoods, yet is manufactured from sustainably sourced wood.

- Outstanding dimensional stability

ACCOYA®

## PROFILES



NOR 01



NOR 02



NOR02 (95mm)





# **HARDWOODS:**

## **BRITISH SWEET CHESTNUT & OAK TIMBER CLADDING**

Primarily we see Softwoods specified for timber cladding, NORclad® are also able to offer selected Hardwoods; British Sweet Chestnut, and Oak; UK, European and American.

### **TANNINS**

With both Oak and Sweet Chestnut it should be noted that for the first few months after installation the high tannin content of the timbers will begin to exude. This in turn will result in staining where the timber either comes into direct contact, or has poor interface detailing with other materials such as render, masonry, or permeable stone. As with all of our Softwood claddings, we once again recommend Stainless Steels. Fixings are used on Hardwood timbers, the Tannins within Oak and Sweet Chestnut will corrode ferrous metals.

### **WEATHERING**

Left uncoated, both Sweet Chestnut and Oak will weather down over time – the natural variation in colour of the freshly machined boards will even out to a more uniform silver/grey.





# DETAILED INFORMATION

## HARDWOODS NORclad® BRITISH SWEET CHESTNUT & OAK TIMBER CLADDING



### Wood Type

UK Sweet Chestnut – Hardwood.  
Oak – Hardwood.



### Typical Lengths

UK Sweet Chestnut – Jointed at either 4.0m or 6.0m, allowing for a small % of cutbacks.

Oak – Finger jointed lengths open up the availability to match specification.



### Typical section sizes

UK Sweet Chestnut – Ex 25mm x 75, 100, 125, 150mm.

Oak – Ex 25mm x 75, 100, 125, 150mm.



### Strength & working properties

UK Sweet Chestnut – Sweet Chestnut resembles Oak, although is easier to work with than Oak. Pre-drilling would be recommended.

Oak – Pre-drilling, and screw fix would be recommended.



### Origin

UK Sweet Chestnut – Across the UK.  
Oak – UK, Europe, America.



### Density

UK Sweet Chestnut – 550 – 650 kg per m<sup>3</sup> at 16% moisture content.

Oak – 670+ kg/m<sup>3</sup> average.



### Typical End Uses

UK Sweet Chestnut – Cladding.

Oak – Timber Frame, Cladding.



### Availability

UK Sweet Chestnut – Sawn and planed products in a wide range of thicknesses, widths and profiled patterns.

Oak – Sawn and planed products in a wide range of thicknesses, widths and profiled patterns.



### Fixings

UK Sweet Chestnut – Stainless steel fixings are always recommended.

Oak – Stainless steel fixings are always recommended.



### Durability

UK Sweet Chestnut – Durable (Class 2 EN350-2).

Oak – Durable.



### Dimensional stability

UK Sweet Chestnut – When the product is finger jointed and moisture content is 18%, movement will be small.

Oak – When the product is finger jointed and moisture content is 18%, movement will be small.



### Sustainability

UK Sweet Chestnut – Sourced from well managed forests – FSC® reg: C010188 Certified products available on request.

Oak – Sourced from well managed forests – FSC® reg: C010188 Certified products available on request and/or PEFC available on request dependent on origin selected.

# HARDWOODS: BRITISH SWEET CHESTNUT & OAK TIMBER CLADDING

## DETAILED INFORMATION CONTINUED



**UK Sweet Chestnut** – Sweet Chestnut has a high tannin content which can be released when the timber becomes damp or wet. This can lead to staining in contact with metal or ferrous fixings. It is advisable to protect any surfaces that may come into contact with the board prior to fixing. Staining may be removed using an oxalic acid cleaning agent. Once the tannins have exuded, untreated the timber will weather to a silver/grey.

**Oak** – Oak has a high tannin content which can be released when the timber becomes damp or wet. This can lead to staining in contact with metal or ferrous fixings. It is advisable to protect any surfaces that may come into contact with the board prior to fixing. Staining may be removed using an oxalic acid cleaning agent. Once the tannins have exuded, untreated the timber will weather to a silver/grey.



### Colour

**UK Sweet Chestnut** – Light straw like appearance, with colour variation due to finger jointing.

**Oak** – Range of colours, spreading through yellow to brown. Colour variation may be more apparent on finger jointed specification.

## PROFILES



NWC4



NWC5



PSE



NWCC1



# FACTORY APPLIED COATINGS



Coated Cladding continues to be popular and NORclad® are able to offer a wide range of factory applied coating options. Our own in house facility allows us to control quality and ensure a high quality finish. NORclad® can also offer a range of brushed, sanded and sawn finishes with a factory applied finish.

Coating performance is important, our Accoya® is dimensionally stable and this stability enhances coating performance considerably, many coating manufacturers offer warranties if their coatings are applied to Accoya®.

## FACTORY APPLIED COATINGS

1. PEFC/FSC® reg: C010188 Certified products available on request
2. Working with a number of species
3. Offer factory-painted Accoya® and ThermoWood
4. High-end painted Timber Cladding





# DETAILED INFORMATION

## FACTORY APPLIED COATINGS

### FACTORY APPLIED COATINGS

NORclad® offer factory finished coated options, manufactured and coated in The UK.

Working with a number of different timber species, all either FSC® reg: C010188 Certified products available on request and/or PEFC.

NORclad® offer factory-painted Siberian Larch, ThermoWood, and Red Grandis.

Working with some of the leading paint manufactures in the field including Sansin, NORclad® are able to offer the natural appearance of timber with a full range of colours or stains to fit your project, such as Sansin and Remmers.

A quality controlled environment which is quick and efficient, ensuring consistent quality throughout the order, offering significant saving in time, labour, and money VS on site application.

01. High-end painted Timber Cladding.
02. A quality controlled environment which is quick and efficient, ensuring consistent quality throughout the order from the first board, to the last.
03. Significant saving in time, labour, and money.
04. Quick and efficient production and delivery process.

## PROFILES



NWPC1



NWPC2



NWPC3



NOR 01



NOR 02

Below is the performance of Accoya® against other species after 10 years exposure.

Accoya

Larch

Western Red Cedar

Accoya



## ABOUT PRESSURE TREATMENT

Different species of timber are classified in terms of their natural durability and permeability to preservative treatment. Timber species rated with a high level of natural durability may not require timber treatment however if any sapwood is present or the species does not have a high natural durability rating then preservative treatment is recommended.

When selecting timber for treatment these factors along with the end use of the timber, or Use (British/European Standard BS EN 335-1) determine how much preservative is required to provide long term protection against insect attack and fungal decay. Treatment is then carried out in accordance to BS8417 Preservation of Wood, Code of practice.

To achieve effective and long term preservative treatment four key factors must be followed:

1. Appropriate selection and preparation of wood
2. Use of an effective wood preservative
3. Selection of desired service life

Timber Cladding is growing in popularity as a material within the construction industry. Being a versatile, aesthetically pleasing and cost effective material, there is an ever increasing demand across all sectors of the industry, noticeably in **Residential, Education, Health Care and Retail** projects.

## ABOUT FIRE TREATMENT

A number of projects in these sectors often require the façade to meet Euro Class B/Class “0” (BS 476 Part 6 & 7 ‘Spread of Flame’). This is possible with additional Fire Retardant Treatments, at NORclad we work with 2 processes for applying Fire Treatment;

- 01.** When working with NORclad® Lite and NORclad® Brunnea Pressure treatments, an additional pressure treatment for EuroClass B would not be achievable. On these materials we offer application through an in house factory controlled system to EuroClass B through an ISO 9001 & 14001 audited Spray & Brush Line.
- 02.** When there is no requirement for a Preservative treatment we are able to offer EuroClass B Fire Treatment via a combination of high pressure impregnation in a treatment cylinder followed by heat curing under controlled conditions, the Sentrin FRX product is our choice for Fire Treating a number of species including Canadian Western Red Cedar and Abodo to EuroClass B.

Both applications are designed to last for the life of the building and annual maintenance is required.





# HOW TO SPECIFY NORCLAD TIMBER CLADDING





If you have decided that Cladding is going to be one of the materials on your project the next step is to create a specification that will meet the criteria and expectations you, and your client have.

The NORclad® team will work with you to find the best solution for your project, including:

1. Material / Species
2. Profile
3. Size
4. Treatment
5. Factory applied coatings
6. Requirement for Euro Class B

We offer installation, detailing guidance based on TRADA documentation, with a wealth of knowledge and information on how different timbers will perform over the life span of your project.

Please get in contact if you would like NORclad® to create an H21 specification for you.





The choice of materials by buyers in every market sector is now influenced by environmental concerns and to compete effectively, wood products must show their environmental credentials.

In the timber trade, there is an increasing demand for FSC® and PEFC certified wood. Major companies and government bodies increasingly favour suppliers which offer chain of custody certification.

## CHAIN OF CUSTODY/TIMBER CERTIFICATION

### WHAT IS FSC® AND PEFC?

- FSC® stands for Forest Stewardship Council®
- PEFC stands for Programme for the Endorsement of Forest Certification



The mark of responsible forestry



Both of the above organisations are global bodies that are involved in guaranteeing that timber comes from a responsible source.

### WHAT IS CHAIN OF CUSTODY?

Chain of Custody certification, is an assessment from an independent, qualified expert who verifies in writing that the wood flow system applied by a business traces the flow of wood from certified forests through the business and meets the exacting requirements of the certification scheme.

In short Chain of Custody certification monitors the amount of timber a company buys from responsible and well managed sources. It traces and records the movement of all timber through the business and when the timber package is then sold to customers, it confirms all procedures have been followed by stating an FSC® *reg: C010188 Certified products available on request* or PEFC claim on sales documents.





**NORclad**<sup>®</sup>  
Part of **National Timber Group**

## CONTACT US TODAY

At NORclad<sup>®</sup>, we pride ourselves on proactive communication with both existing and prospective clients.

If you have a question to ask us or would like to receive a quotation, please feel free to contact us today via email or phone.

### HEAD OFFICE

NORclad<sup>®</sup>  
C/O Arnold Laver,  
Unit A Third Way,  
Avonmouth, Bristol  
BS11 9YH

### PHONE

+44 (0) 1275 794 735

### EMAIL

[sales@NORclad.co.uk](mailto:sales@NORclad.co.uk)

### WEBSITE

[www.NORclad.co.uk](http://www.NORclad.co.uk)

