



Composite Prime® was established in 2014 by **Domenic Harrison** and **Charles Taylor**. Composites came quite naturally to the two entrepreneurs due to their families' history in the plastics and timber industries.

The Harrison family has a history in the plastics sector. Geoff Harrison, a stalwart of the field, was a founding member of Polypipe Plc with Kevin McDonald in 1980.

The Taylor family has been established in the timber industry for more than 60 years, with Charles being a third generation timber merchant.

Both highly experienced in their respective fields, Domenic and Charles have created the perfect partnership with Composite Prime®'s unique formula of wood-plastic decking and cladding, as well as a pioneering range of innovative flooring, cleaning products and accessories.



**composite**  
*adjective* Made up of several elements.

**prime**  
*adjective* Of the best possible quality.

## UK born & raised

The Cow and Calf Rocks in Ilkley where we are based, inspired our philosophy that 'the sky's the limit' when it comes to developing new products.



Using our combined heritage, we strive to deliver more innovative, eco-friendly products to market.



## Manufacturing process

We start the process by testing each batch of raw materials to ensure they meet our stringent quality control parameters. Using the **latest technology** in our state-of-the-art factory, we blend the components together to create a finished product that's **engineered to perform**. We test and inspect every production batch to ensure that it meets our specification criteria before we clean and package it. The end result is our guaranteed quality products that are **designed to last**.



## Why choose Composite Prime?

Our range of *HD Deck*®, *HD Clad*®, *HD Fence*™ and *Touchstone Flooring*™ composite products feature a range of benefits that will keep your home and garden looking fantastic for years to come. We are proud that all our products are truly **eco-friendly** and have been sourced and manufactured using **socially responsible** methods.

*HD Deck*®, *HD Clad*® and *HD Fence*™ are low maintenance and **durable alternatives to traditional timber**. Our boards are extra hard-wearing and don't need to be coated with life-extending oils and paints. Their unique formula also means that they won't rot or splinter, making them extra safe for children and animals.





We're confident in the quality of our *HD Deck®*, *HD Clad®* and *HD Fence™* composite products because we know the origin and species of the tree in our wood flour.

### Eco-Friendly

Our wood flour is

**FSC® 100%  
CERTIFIED END OF  
LIFE TIMBER**

from responsible  
sources

### Strong and Durable

Composite Prime® uses

**QUALITY OAK  
HARDWOOD FLOUR**

a hardwood that's perfect  
for wood composites

## Socially Responsible

## Environmentally Friendly

**176 MILLION**

**1.8 BILLION**

**280**



decking\_

HD **DECK**<sup>®</sup> 

HD **DECK**<sup>®</sup> 

HD **DECK**<sup>®</sup> 

HD **DECK**<sup>®</sup> 

HD **DECK**<sup>®</sup>  

cladding\_

HD **CLAD**<sup>®</sup> 

fencing\_

HD **FENCE**<sup>™</sup>

 **EDGE**<sup>™</sup>  
Balustrade Systems

flooring\_

 **TOUCHSTONE**<sup>®</sup>  
**FLOORING**

accessories\_

HD **PROTECT**<sup>™</sup>

***abzorb*****it**





# HD DECK®

*HD Deck® Pro* delivers luxury. This extra-wide composite decking board features a traditional wood grain that will add quality and style to any outdoor living space.

This double-sided composite board comes in two on-trend **designer shades**. The light hue of champagne is subtle and warm, whilst the elegant tone of oyster is neutral and understated.

And *HD Deck® Pro* is the only **200mm wide** capped composite decking board in the UK.

*HD Deck® Pro* takes composite decking boards to the next level, with its 'capped' design, creating a **coated layer** that offers increased protection against fading and the elements, for an extra long life.

- **Premium 200mm extra-wide**
- **Natural wood grain**
- **Capped stain resistant**
- **Slip resistant**
- **Durable**
- **Reversible**



Scan to order your **FREE** *HD Deck® Pro* samples



**Champagne**  
Side 1



**Oyster**  
Side 2

## Premium Extra-Wide Composite Decking

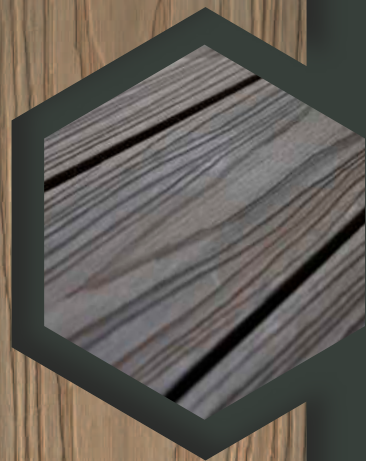


True Grain Colour System™

*HD Deck® Pro* Champagne







# HD DECK®

**HD Deck Dual® decking boards have an unrivalled likeness to timber, which really sets them apart from other composites.**

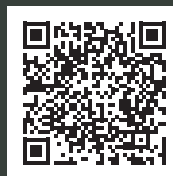
The natural wood grain not only looks and feels great, it offers **maximum performance against stains.**

Our unique **True Grain Colour System™** replicates the subtle variation and depth of colour seen in timber – and ensures no two boards are the same colour.

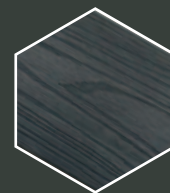
This dual-coloured composite board offers a **reversible two-colour option**, providing the opportunity to lay a deck with contrasting colours to create a bespoke finish.

HD Deck Dual® also features a 'capped' design, creating a **coated layer** that offers increased protection against fading and the elements, for an extra long life.

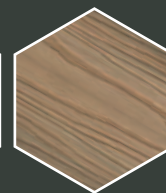
- **Reversible two-colour option**
- **Natural wood grain**
- **True Grain Colour System™**
- **No two boards are the same**
- **Capped stain resistant**
- **Slip resistant**
- **Durable**



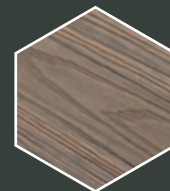
Scan to order your **FREE** HD Deck Dual® samples



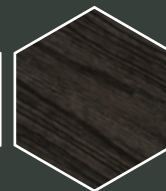
**Slate**  
Side 1



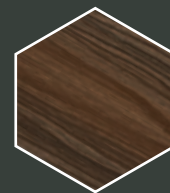
**Natural Oak**  
Side 2



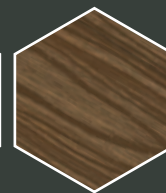
**Antique**  
Side 1



**Carbon**  
Side 2



**Walnut**  
Side 1



**Oak**  
Side 2



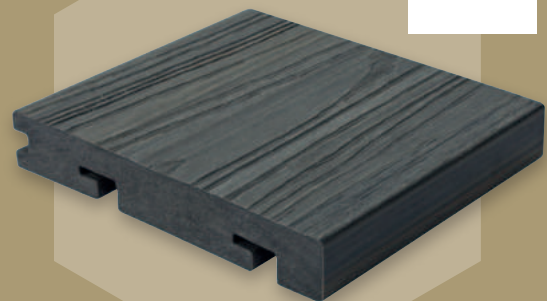
**True Grain Colour System™**

HD Deck Dual® Antique





## Decking Accessories



The **bullnose board** is perfect for steps and borders.



**T15  
Extended Torx Bit**  
included in every box  
of Universal Clips



*HD Deck Dual®  
only*



**True Grain Colour System™**

*HD Deck Dual® Oak*

**Daily Mail**

“Composite Prime... durable  
low-maintenance decking which  
looks just like the real thing.”





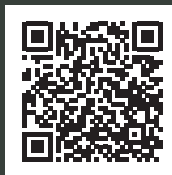
# HD DECK®

COMING 2023

*HD Deck® Klik* features all the performance of *HD Deck Dual®* with added fitment options.

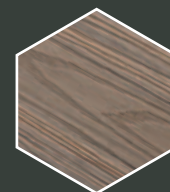
Featuring a solid board construction, *HD Deck® Klik* is compatible with the grad® concept rail system, featuring aluminium rails and the revolutionary push and click installation method saving time and money.

*HD Deck® Klik* can also be installed using our Composite Prime® clip system, offering true versatility for the installer and customer alike.

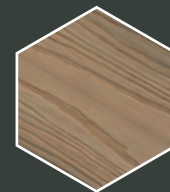


Scan to learn more about *HD Deck® Klik*

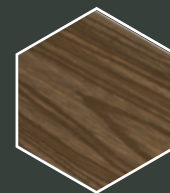
- Solid board construction
- Versatile installation options
- Compatible with Composite Prime® Universal clip system
- Compatible with grad® concept's invisible clip system:
  - push and click system\_
  - no screws\_
  - aluminium rail substructure with optional pedestals\_
  - install time up to 60% less than a traditional deck\_
  - full system caters for surface and finishing requirements\_
- Capped design
- True Grain Colour System™



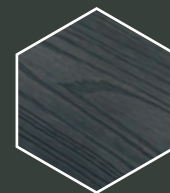
Antique



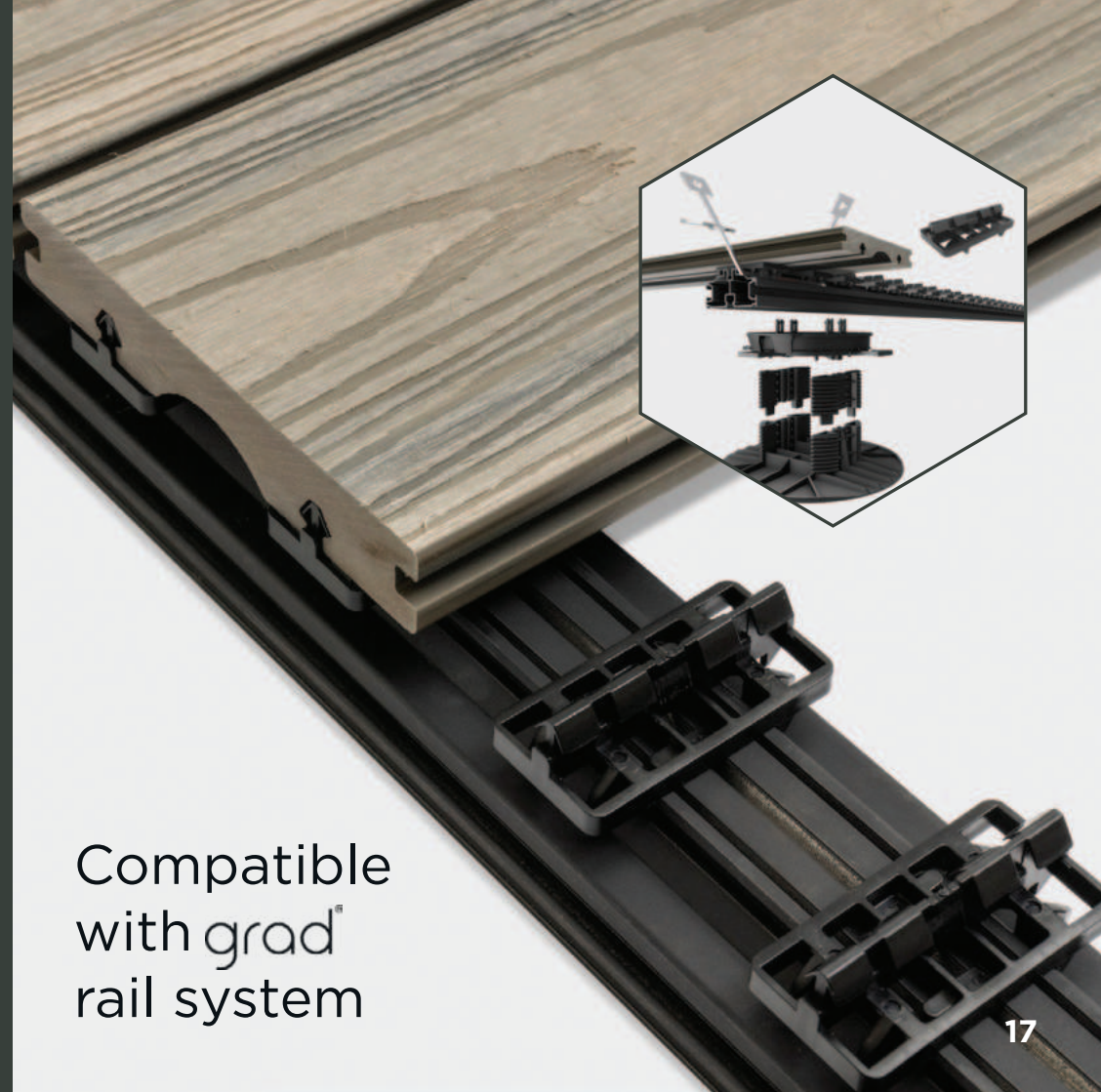
Natural Oak



Oak



Slate



Compatible with grad® rail system



NBS Plus







# HD DECK® 3D



Scan to order  
your **FREE**  
HD Deck® 3D  
samples

The unique True Grain Colour System™ in an uncapped board – a subtle variation replicating the natural tones seen in timber – ensures that no two boards are the same colour.

HD Deck® 3D is available in four wood tones with a deeply textured wood grain and a contemporary groove design on the reverse.

- Textured wood grain one side
- Contemporary grooved reverse side
- True Grain Colour System™
- No two boards are the same
- Uncapped board
- Deep embossing
- Slip resistant
- Durable



## Deeply Textured Wood Composite Decking

True Grain Colour System™  
HD Deck® 3D Weathered Oak





# HD DECK® 150



Scan to order  
your **FREE**  
HD Deck® 150  
samples

Whether you're hosting a party, barbecue or entertainment, it's good to know that Composite Prime®'s decking won't splinter or become slippery because of its superior composite ingredients.

HD Deck® 150 comes in three different colours, which means there's plenty of variety to choose from when designing your decking to complement the space around it.

- Contemporary design
- Popular colour options
- Two reversible profiles
- Extra strong board
- Consistent colour
- Slip resistant
- Durable



# HD DECK® 150 FIRE

HD Deck 150® Fire offers the same benefits of HD Deck 150® but is **class B fire rated**. The higher rating provides customers with balconies, verandas and roof terraces peace of mind fire protection.

## Contemporary Fire Rated Composite Decking







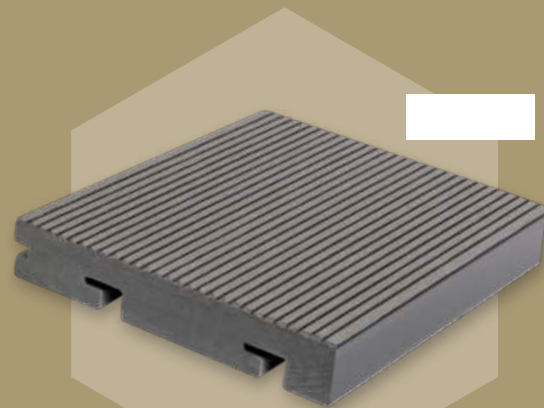
## Decking Accessories



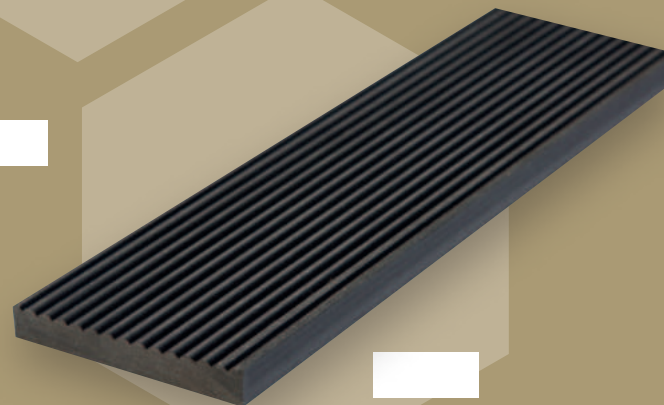
**T15  
Extended Torx Bit**  
included in every box  
of Universal Clips



*HD Deck® 150  
only*



The **bullnose board** is  
perfect for steps and  
borders.



**74mm and 150mm fascia  
boards** are available for a  
professional finish.



*HD Deck Dual® Antique*

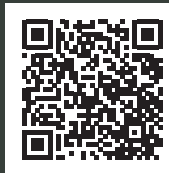
“Go green... create a beautiful  
garden without damaging  
the environment.”

  
**THE SUNDAY TIMES**





# HD FENCE™



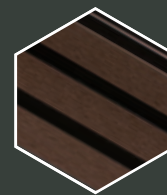
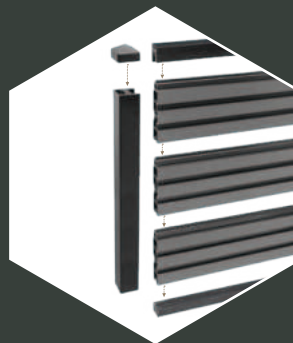
Scan to order  
your **FREE**  
*HD Fence™*  
samples

Designed to be as versatile and easy to fit as possible, with the ability to be installed with a range of different posts, *HD Fence™* offers a clean and contemporary border to your outside space.

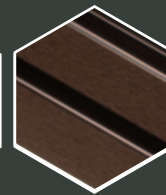
The double-sided design gives **shiplap** and **shadow gap** profiles to select from and means both sides of your fence have an equally stylised finish.

*HD Fence™* is a complete system featuring aluminium bottom and top finishing rails and fixing brackets and can be fitted to Composite Prime® aluminium fence posts or **retrofit to existing concrete posts.**

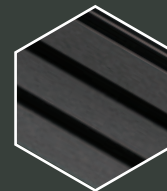
- Contemporary 2 in 1 design
- Multiple fitment options
- Aluminium posts and trims
- Retrofit to concrete posts
- Save time and money
- Tested to withstand 100+ mph winds
- Complete system
- Durable



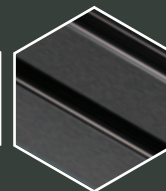
**Walnut**  
Shadow Gap



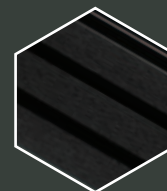
**Walnut**  
Shiplap



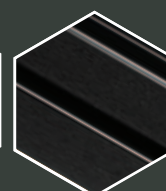
**Silver**  
Shadow Gap



**Silver**  
Shiplap



**Lava**  
Shadow Gap



**Lava**  
Shiplap



*HD FENCE™ Silver Shadow Gap Design*



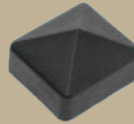
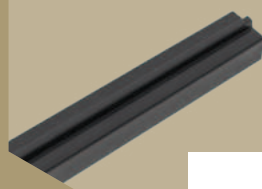
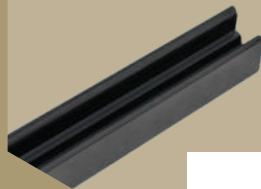
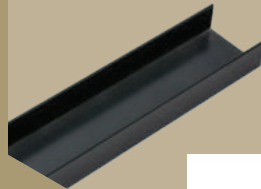
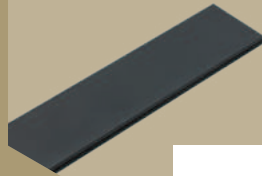
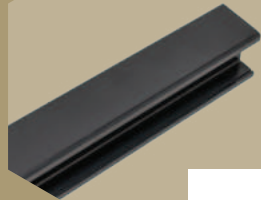
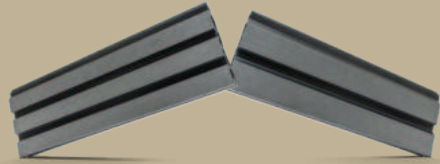
NBS Plus





# HD FENCE™

Complete System:



## Contemporary Composite Fencing

HD FENCE™ Walnut Shiplap Design







# HD CLAD® PRO

**HD Clad® Pro is a wood grain, composite cladding system that offers long-lasting, low maintenance natural facades for handsome exteriors.**

Enhance and transform your home and garden by choosing from a range of natural colours, designed to suit your environment. HD Clad® Pro uses exclusively FSC® 100% certified hardwood flour and recycled plastic which combine to produce a high quality finish and **exceptional durability** that outperforms traditional timber.

Suitable for commercial and residential properties alike, HD Clad® Pro's unique properties include:

- **Easy installation**
- **Capped wood grain finish**
- **True Grain Colour System™**
- **Will not warp, bend or splinter**
- **Matching trims**
- **Mixed use application**



Scan to order your **FREE** HD Clad® Pro samples



**True Grain Colour System™**

HD Clad® Pro Cedar Brown

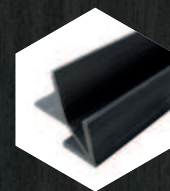




# Wood Grain Composite Cladding System

True Grain Colour System™

HD Clad® Pro Cedar Brown

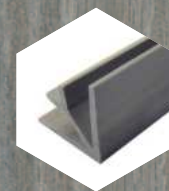


Outside corner trim



Starter clip

Carbon

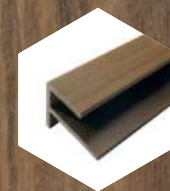


Inside corner trim



Starter strip

Cedar Grey

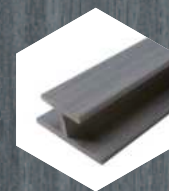


End trim F-shaped



Fixing clip

Cedar Brown



Joining trim L-shaped



Packer button

Slate





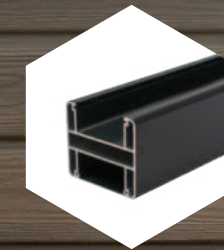
True Grain Colour System™

HD Clad® Pro Slate  
used as fencing

**HD Clad® Pro** can be easily used as a fence with our fence posts and selection of accessories.

With its **exceptional durability**, capped woodgrain finish and easy installation, HD Clad® Pro is a great alternative to timber fencing. Featuring our signature **True Grain Colour System™** which provides the natural aesthetic of real timber without any of it's failings. Low maintenance, durable and environmentally friendly.

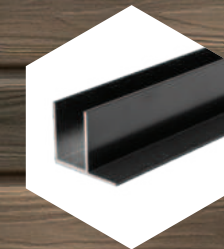
HD **CLAD**® **PRO**  
As a **FENCE**



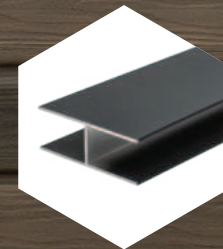
Composite Prime®  
fence post



Finishing  
U Channel

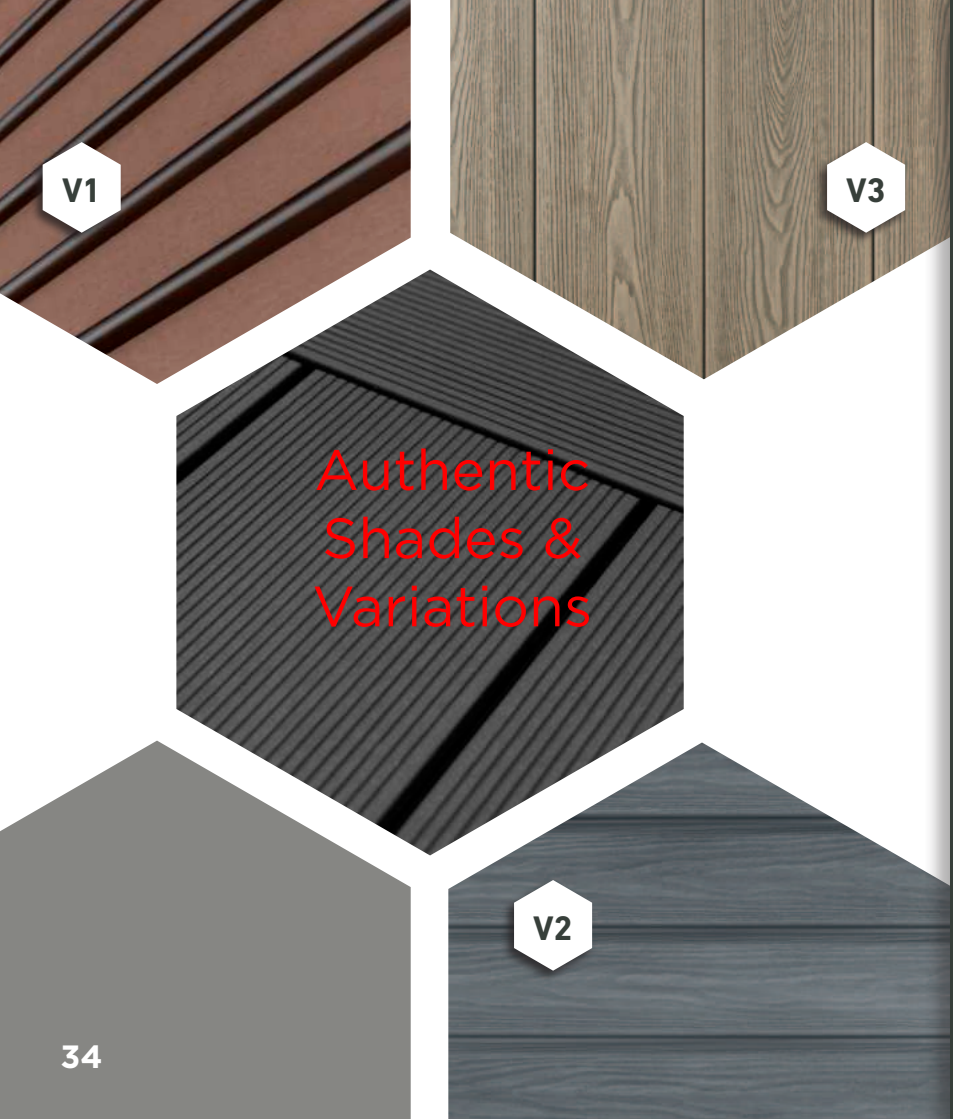


End trim  
F-shaped



Joining trim  
I-shaped



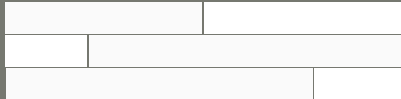


All our products have an **intentionally varied appearance** that resembles the tones you'd find in natural wood and stone.

The variations range from slight (V1), to moderate (V2), and substantial (V3). This guide outlines how much variation you should expect in each product.

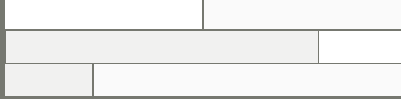
SLIGHT VARIATION

V1



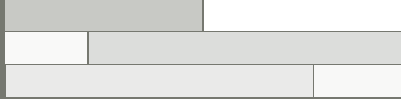
MODERATE VARIATION

V2



SUBSTANTIAL VARIATION

V3



		V1	V2	V3
HD Deck® Pro	Champagne	•		
	Oyster	•		
HD Deck Dual®	Slate		•	
	Natural Oak		•	
	Antique			•
	Carbon	•		
	Walnut		•	
	Oak			•
HD Deck® Clik	Slate		•	
	Natural Oak		•	
	Antique			•
	Oak			•
HD Deck® 3D	Golden Oak		•	
	Black Oak		•	
	Burnished Oak		•	
	Weathered Oak			•
HD Deck® 150 (flat colours)	Silver	•		
	Lava	•		
	Walnut	•		

		V1	V2	V3
HD Clad® Pro	Cedar Brown			•
	Cedar Grey			•
	Carbon	•		
	Slate		•	
HD Fence™ (flat colours)	Silver	•		
	Lava	•		
	Walnut	•		





## EDGE™ Glass Balustrade



**EDGE™ Glass Balustrade** is designed with simplicity in mind to create a modern and polished finish to your outdoor space. Customise with a aluminium handrail or choose a clean handrail-free design\*.

- 10mm toughened clear glass panels**
- Quick, safe & easy installation**
- CMS MARK compliance to classification EN12150**
- Polished edges and dubbed corners**
- Complies with building regulations**
- 100% recyclable**
- Fully reinforced**

**\*For decks over 600mm high** please seek professional advice regarding current balustrade building regulations as Edge™ Glass Balustrade will require a handrail.



## EDGE™ Vinyl Balustrade



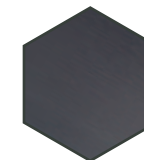
**EDGE™ Balustrade System** is supplied as a kit that contains everything you need to install this stylish and low maintenance solution quickly and easily.

- Ready to fit and easy to assemble**
- Will not rot or decay**
- Very strong and fade resistant**
- Requires no treatment, staining or paint**
- Complies with building regulations**
- 100% recyclable**
- Fully reinforced**

**For decks over 600mm high** please seek professional advice regarding current balustrade building regulations.



White



Anthracite



Golden Oak



# HD PROTECT™

**HD Protect™** Premium Joist Tape is a self-adhesive tape designed to protect the top of your timber from moisture that can lead to rot.

- Extends the life of timber joists
- Oversized for extra coverage
- 100% waterproof barrier
- Extra thick for superior self-sealing
- Clean and easy to use
- Available in standard and extra-wide



A Composite Prime Product

## ***abzorbit***

### **Grease & Oil Stain Remover**

**abzorbit™ is a revolutionary new aerosol spray that treats and removes grease and oil stains. Simply spray on and brush off!**

*abzorbit™* can be used to treat stains on any timber or uncapped composite decking product. Ideal for use on *HD Deck® 150* and *HD Deck® 150 Fire*.





## TOUCHSTONE FLOORING

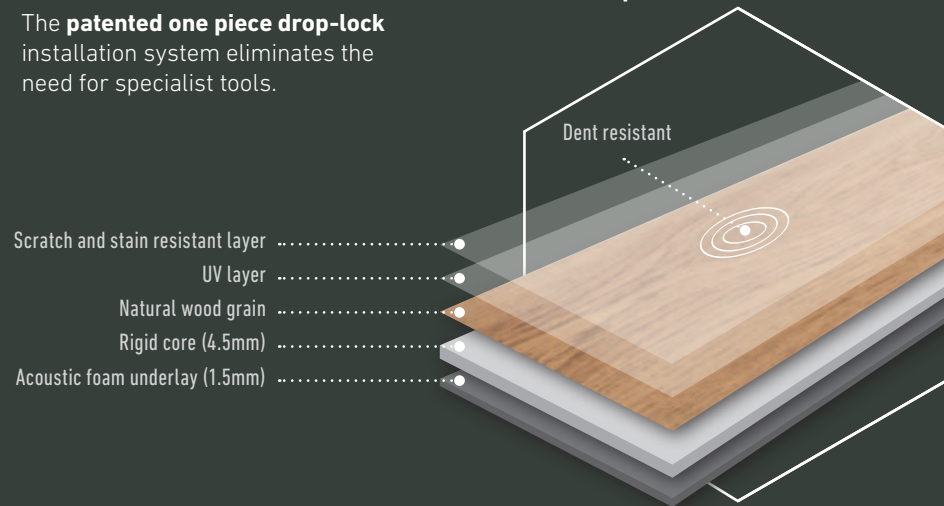
*Touchstone® Flooring* is a luxury interior flooring system, with a true grain wood appearance. The **textured 3D surface** gives the look and feel of natural wood, but without any of the disadvantages of solid or engineered wood floorings.

The **patented one piece drop-lock** installation system eliminates the need for specialist tools.



Scan to order  
your **FREE**  
*Touchstone®*  
*Flooring samples*

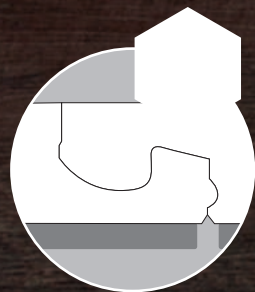
- **Quick and smooth installation**
- **Compatible with underfloor heating**
- **Domestic and commercial use** (Class 33)
- **Colour fast** (Grade 6)
- **Matching trims**
- **Waterproof**



## Authentic Wood Grain Waterproof Flooring System

*Touchstone™ Flooring Angel*





Slide into position

1



Drop into place

2



Click together

3

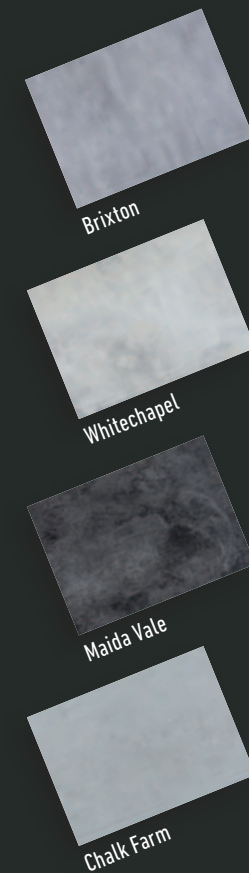


Patented Drop-Lock Installation

### Zone 1 Wood Grain Finishes



### Zone 2 Stone Finishes







Scan to find  
your nearest  
**PRO** Installer

Composite Prime®'s PRO Installer Programme provides you with a directory of certified installers.

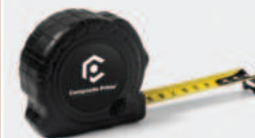
Every certified PRO Installer has successfully completed our intensive product training and adheres to our professional Code of Practice.

You can find your local PRO Installer on our website at  
[www.composite-prime.com/find-an-installer/](http://www.composite-prime.com/find-an-installer/)

Interested in becoming a PRO Installer? Apply online to join our team:  
Visit [www.composite-prime.com/install](http://www.composite-prime.com/install) for more details.



PRO Installer  
Merchandise

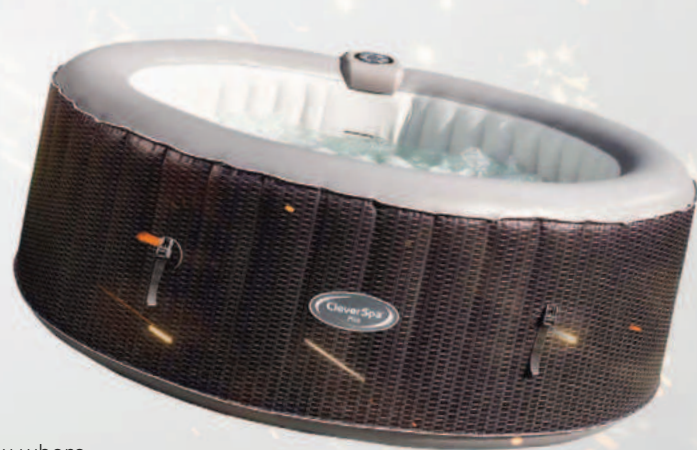


HD Deck Dual®  
Slate

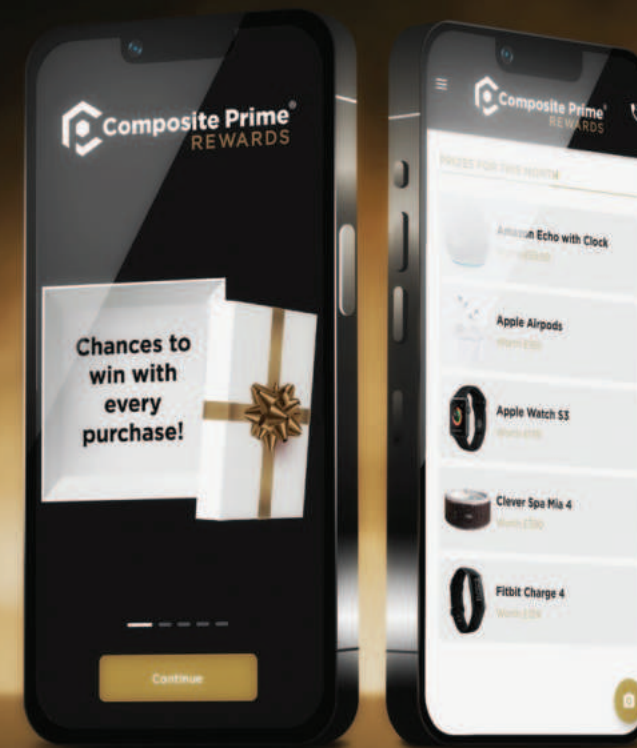




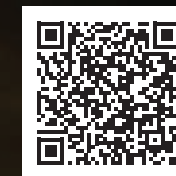
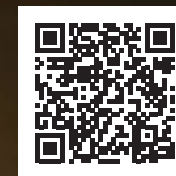
**BE IN WITH A CHANCE OF WINNING  
FANTASTIC PRIZES EACH AND EVERY  
MONTH WITH EVERY PURCHASE!**



Each month, there's a new prize draw where we've lined up great prizes which will be up for grabs. You can enter our prize draw as many times as you like throughout the year, all you need to do is submit your proof of purchase or finished installation photograph through our **Rewards** app.



For more information please visit: [www.composite-prime.com/rewards/](http://www.composite-prime.com/rewards/)  
and for terms and conditions visit: [www.composite-prime.com/rewards/rewards-terms/](http://www.composite-prime.com/rewards/rewards-terms/)

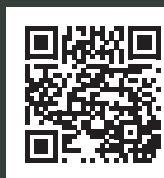
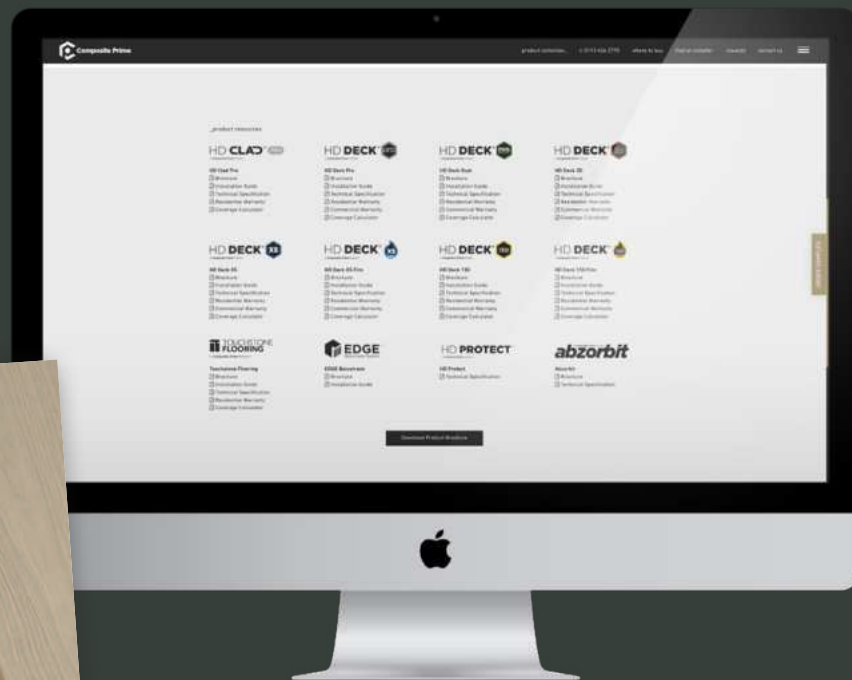


- 1 Download the app and register**
- 2 Purchase a Composite Prime® product**
- 3 Take a photo and upload your receipt**
- 4 Sit back and cross your fingers**



## Online Resources

- **Instructional videos**
- **Brochures**
- **Fitting guides**
- **Technical specifications**
- **BIM data**



Scan to view our  
**Resources** page



# PRIME DESIGN

## Composite Prime 3D Deck Builder



Plan projects with **Prime Design** 3D Deck Builder.  
Create a visual of your decking and produce an estimated bill of quantities that lists everything needed to complete the project.  
Explore all the products we have available to give you a realistic view of your project whilst providing peace of mind that you're making the right design decisions for your bespoke space.



Scan to try  
**Prime Design**  
now



## Where to Buy



Scan to order  
find your nearest  
**Stockist**



## Composite Prime® – as featured in...

adf



METRO

Daily Mail

Design Buy Build

eppm

GCR

HOUSEBUILDER  
& DEVELOPER

itv

THE LANDSCAPER

The Sunday Telegraph

living

MODERN  
Gardens

ParkHome

HOUSE  
& GARDEN

Professional  
Builder

ProLandscaper



THE SUNDAY TIMES







[www.composite-prime.com](http://www.composite-prime.com)

