



senses

REARO®

KITCHEN SURFACES

senses

REARO®

KITCHEN SURFACES

Grey Lunar Slate

The Senses range of high-pressure laminate (HPL) kitchen surfaces includes worktops, splashbacks, upstands, and breakfast bars.

With a choice of 24 décors, there's a style to suit every kitchen, from realistic woodgrain, marble and stone to patterned or plain designs in a variety of textured finishes.

Senses kitchen worktops are stylish, durable, and easy to clean.

Choose from smooth post-formed (rounded) edges or sleek square-cut options. Matching breakfast bars, splashbacks, upstands, and edging complete the overall design.

All Senses products come with a fitting and maintenance guide and are fully backed by a comprehensive 5-year guarantee for added peace of mind.

Beautifully Crafted, Effortlessly Maintained.

Made in Britain

The Senses range is manufactured in the UK by skilled crafts workers.

Easy Installation

Senses products are lighter and easier to install than materials such as granite or concrete, saving installation costs and time.

Minimal Maintenance

The hygienic, antibacterial laminate surface is easy to clean and requires minimal maintenance. General cleaning requires only a damp cloth and a mild detergent, making it a low-maintenance choice compared to natural stone and wood surfaces.

Scratch Resistant

Senses worksurfaces are engineered to be durable and resistant to scratches and stains, making them a reliable choice for everyday kitchen use.

5-year Guarantee

Enjoy peace of mind with a comprehensive 5-year Guarantee, assuring you of durability and reliability.



With a choice of 24 laminate décors, there's an affordable and attractive option to suit every kitchen. The Senses range includes realistic woodgrain, marble and stone décors. Plus, patterned and plain designs in a variety of textured finishes.

Each worktop, breakfast bar, splashback, and upstand in our collection is meticulously crafted in the UK to meet the highest quality and durability standards, ensuring your kitchen looks stunning and stands the test of time.

Whether your interior design style is minimal and clean, moody and industrial, or you prefer a comforting retreat with warm, natural textures and sustainable materials, we've got the décor for you.

Explore our collection and take inspiration from our three key design trends to find the perfect match for your unique style and vision.



Minimal Modern

Page 4-5



Contemporary Retreat

Page 6-7



Moody Luxury

Page 8-9

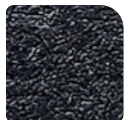
Senses Textures

Senses kitchen surfaces are available in eight textured finishes. Each texture has been chosen to complement the décor perfectly.



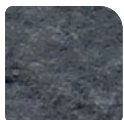
Matte

A smooth, flat, non-glossy finish that offers a subtle, elegant appearance.



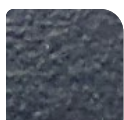
Urban

A slightly rough, matte texture. It replicates the natural feel of unpolished stone or concrete.



Italian Stone

A natural, worn, aged surface. It is slightly rugged and has a comfortable, weathered feel.



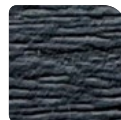
Dogal

A smooth matte finish with a slight texture to the surface, it has a subtle tactile quality.



Rock

A lively, organic and irregular texture with varying depths.



Natural

A very loose, soft-grain texture with light embossing to give it a three-dimensional feel.



Gloss

High shine, smooth, flat finish that mimics natural polished stone surfaces.



Kavir

A natural, fragmented linear woodgrain with a matte finish. It's convincingly authentic yet understated and true to nature.

Senses Profiles

The Senses range of décors has been designed with versatility in mind.

All 24 décors have a classic rounded edge, and six have a sleek, modern square edge profile, giving you the power to choose the perfect style for your kitchen.



38mm Rounded Edge Worktop

Our 38mm rounded-edge worktops are post-formed with a beautiful, smooth curve with a 3mm radius. Ideal for users who appreciate beauty and functionality, rounded edges offer a safe, classic design that's easy to clean and maintain.



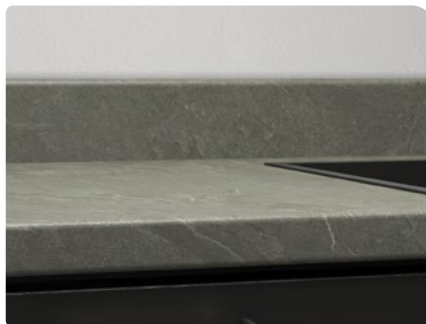
38mm Square Edge Worktop

Our 38mm square-edge worktops are designed for the user who values a minimal, modern aesthetic. They offer a contemporary, streamlined look with precise, clean lines.



Breakfast Bar

Rounded Edge • Square Edge



Upstand

Available in all décors



Splashback

Available in all décors



Colorado Marble worktop, splashback and breakfast bar



Get the look

Minimal Modern

The 'Minimal Modern' style is a simple, clean aesthetic with a sophisticated twist.

If you prefer a pared back look with clean lines, this is the trend for you. A fresh, contemporary, and streamlined look that is both elegant and highly functional.

To achieve this look, choose bright white cabinets, stainless steel utensils and shiny chrome handles.

These sleek elements pair beautifully with the darker stone and marble décors in the Senses range such as Black Rock, and Pietra Grey.

Get the look

Contemporary Retreat

For the person who values high-quality, sustainable products and a connection to nature.

Crafted to emulate natural wood and soft stones, Senses kitchen surfaces add a textured elegance that enhances your kitchen's cosy, inviting mood.

Perfectly complementing rustic brass or copper pot fillers, vintage accessories, and practical, understated hardware, our laminate worktops are the cornerstone of a sustainable, stylish kitchen where modern comfort meets timeless charm. If you have natural, rustic wood cabinetry, choose Salto Rock, or any of the slate or stone décors from the Senses range to achieve this look.

Senses kitchen surfaces are stylish, durable, and easy to clean, providing an affordable, attractive alternative to natural materials without any of the maintenance hassle or costs of the real thing. Plus, they're PEFC-certified and more sustainable, too.





Salto Rock worktop and upstand



Industrial Concrete worktop
Athenian Marble splashback



Get the look

Moody Luxury

For years, all-white kitchens have dominated interior design, epitomizing cleanliness, brightness, and simplicity. However, if this isn't for you, you'll be glad to hear that dark, moody kitchens are now stepping into the spotlight.

These kitchens, with their rich, deep tones and luxurious materials, create an inviting and sophisticated cocooning effect. The atmospheric appearance of a moody kitchen captures attention and exudes a sense of elegance that feels truly high-end.

The best part? Achieving this look doesn't have to break the bank. With the clever use of industrial style laminate décors like stone, marble, and concrete you can create a stunning, luxury kitchen that's both affordable and timeless.

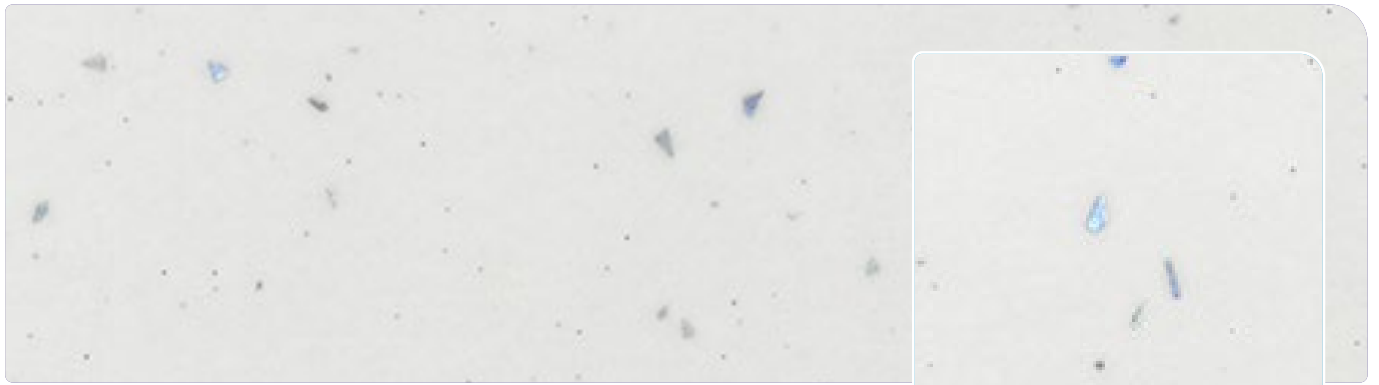
Designing Your Moody Kitchen

Creating a dark and moody kitchen requires careful consideration of colour, texture, and lighting. Start with a deep, rich colour palette—charcoal, deep blues, or even forest greens can serve as the foundation for your design. These colours should be applied to cabinetry, walls, and even the ceiling to create that enveloping, cocoon-like effect.

Next, focus on texture. The interplay of different materials—smooth marble against rough concrete and matte finishes paired with glossy surfaces—adds depth and interest to the space. For example, a concrete-effect countertop can be paired with a marble-look splashback to create a dynamic, luxurious appearance. The key is to balance the industrial feel of materials like concrete with the elegance of stone or marble.

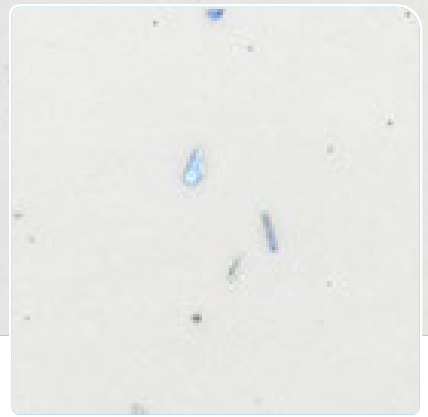
Lighting is also crucial in a dark kitchen. Rather than relying solely on overhead lighting, consider incorporating multiple layers of light. Pendant lights with metallic finishes can provide focused illumination while adding a touch of glamour. Under-cabinet lighting can highlight the textures of your countertops and splashbacks, enhancing the moody atmosphere.





White Fleck

Matte · Rounded Edge · Square Edge



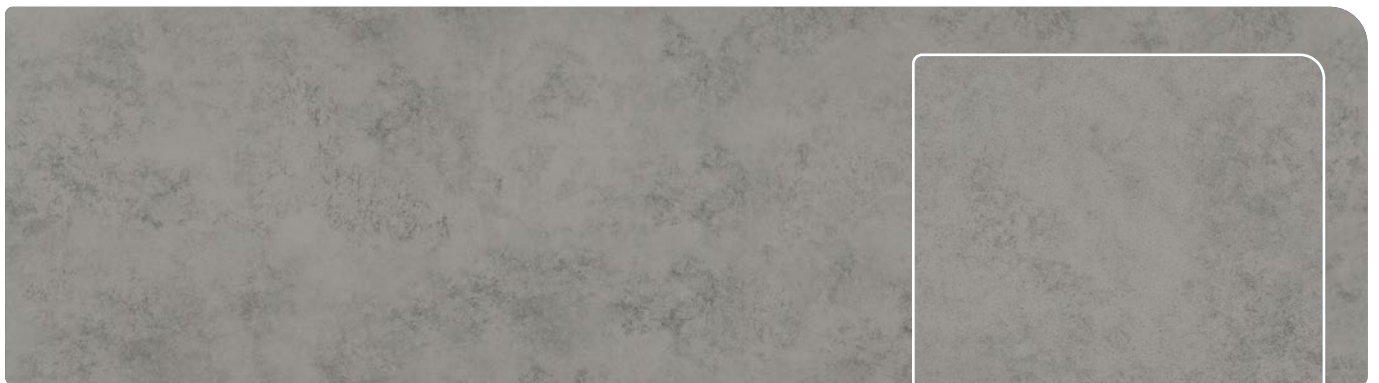
Sand Pebble Sparkle

Gloss · Rounded Edge



Snow Sparkle

Gloss · Rounded Edge



Stormy Sky

Matte · Rounded Edge





Grey Lunar Slate



Misty Sky

Matte · Rounded Edge



Grey Lunar Slate

Italian Stone · Rounded Edge



Industrial Concrete

Urban · Rounded Edge



District Stone

Urban · Rounded Edge · Square Edge





Carrara Marble

Dogal · Rounded Edge



Athenian Marble

Matte · Rounded Edge · Square Edge



Colorado Marble

Matte · Rounded Edge

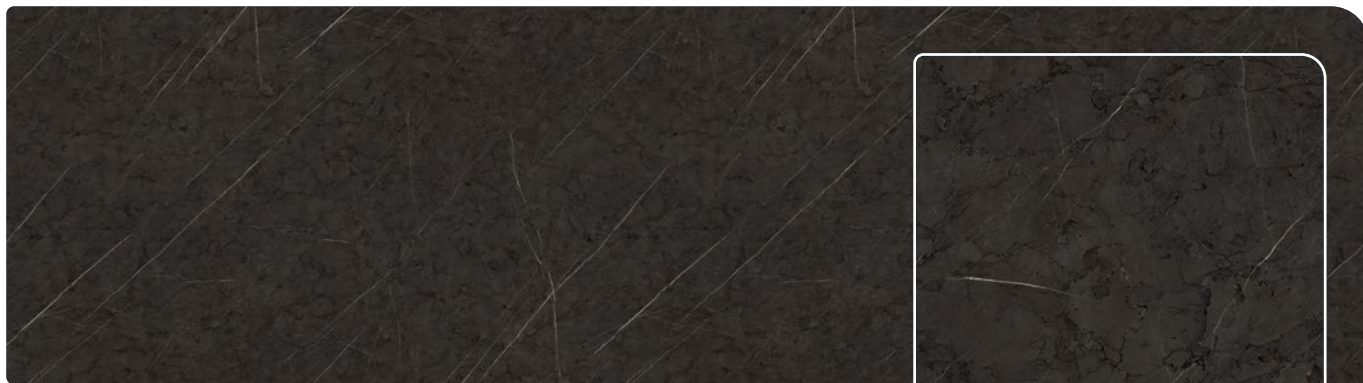


Gransasso

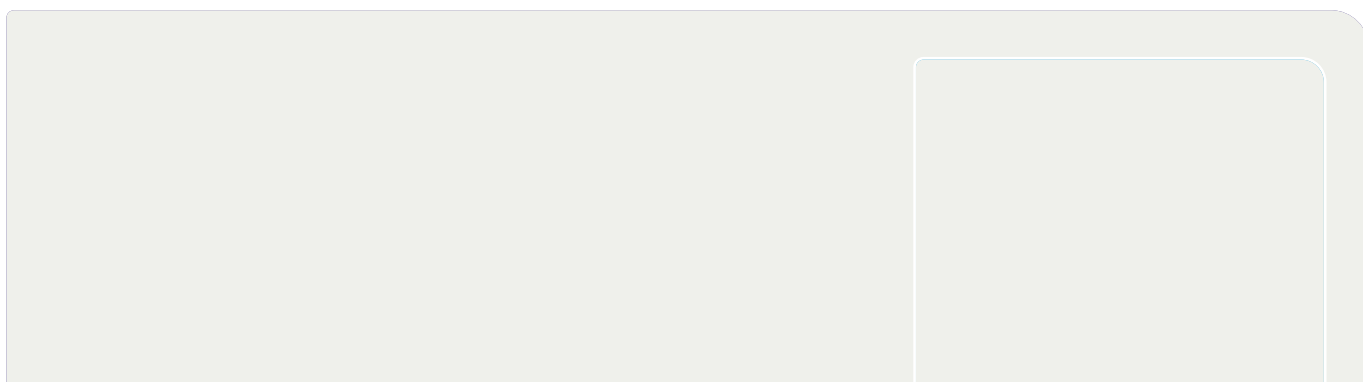
Matte · Rounded Edge



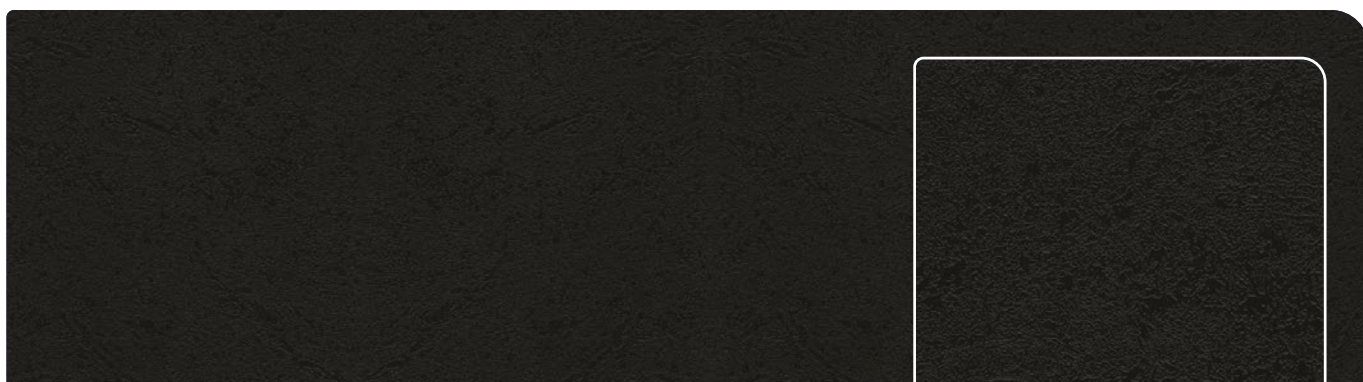
Pietra Grey Marble



Pietra Grey Marble
Matte · Rounded Edge



White Matte
Dogal · Rounded Edge



Black Rock
Rock · Rounded Edge



Walnut Butcher Block
Dogal · Rounded Edge



Sherwood Dark Oak

Kavir · Rounded Edge



Caledonian Grey Oak

Kavir · Rounded Edge



Delamere Light Oak

Natural · Rounded Edge · Square Edge



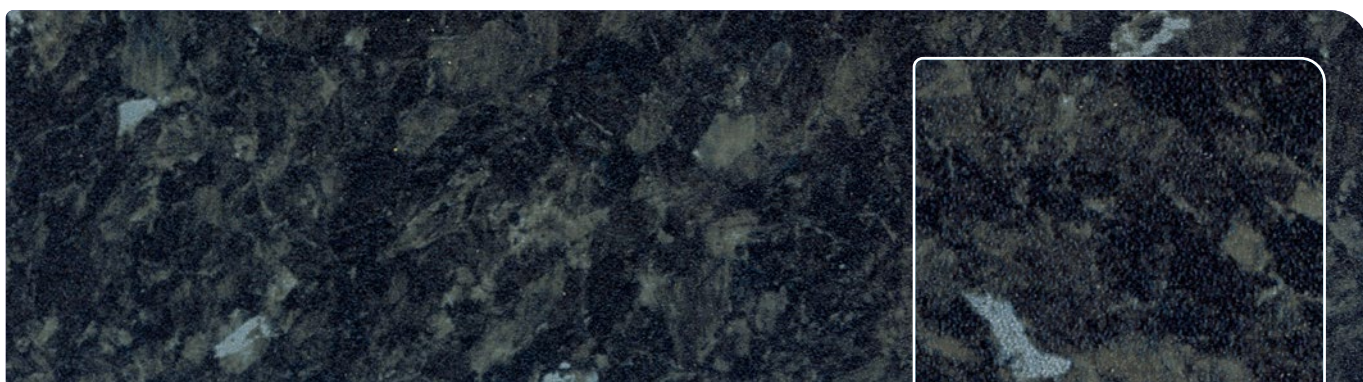
Pembrey Oak

Kavir · Rounded Edge · Square Edge



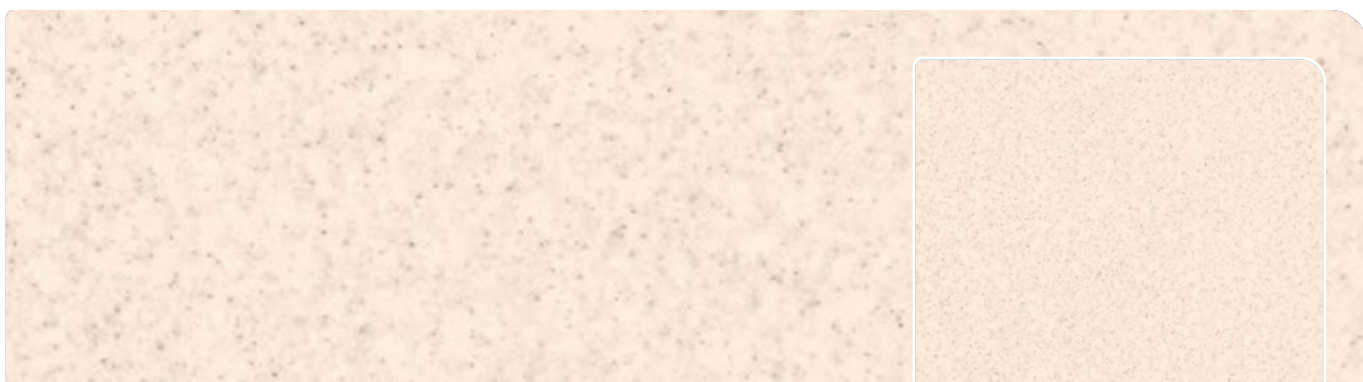
Colmar Oak

Dogal · Rounded Edge



Black Granite

Dogal · Rounded Edge



Sunstone

Matte · Rounded Edge · Square Edge



Salto Rock

Italian Stone · Rounded Edge

Senses Sizes

Rounded Edge

3mm post-formed radius

Worktops

Available in all décors

4100 x 600 x 38mm

3050 x 600 x 38mm

Rounded Edge Worktop
4100 x 600mm

Rounded Edge Worktop
3050 x 600mm

Breakfast Bars

Available in all décors

3050 x 900 x 38mm

3050 x 665 x 38mm

Rounded Edge Breakfast Bar
3050 x 900mm

Rounded Edge Breakfast Bar
3050 x 665mm

Square Edge

Worktop

Available in 6 selected décors

4000 x 600 x 38mm

3000 x 600 x 38mm

Square Edge Worktop
4000 x 600mm

Square Edge Worktop
3000 x 600mm

Breakfast Bars

Available in 6 selected décors

3000 x 900 x 38mm

3000 x 665 x 38mm

Square Edge Breakfast Bar
3000 x 900mm

Square Edge Breakfast Bar
3000 x 665mm

Splashback

Available in all décors

3000 x 1200 x 8mm

Splashback
3000 x 1200mm

Upstand

Available in all décors

4100 x 100 x 18mm

Upstand
4100 x 100mm

Measuring & Cutting

Always double check and measure twice and thoroughly inspect the worktop for any transit damages and marks prior to fitting.

If your Kitchen work surface has an acrylic square edge or matching laminate square edge, extra care should be taken on the following areas:

Cutting to Size

Always cut into the edge, and seal the flat front edge as well as the surface joint.

A defuser protection must be fitted to the underside above any appliances - dishwashers/washing machines - to protect the underside front edge joint from heat and moisture.

Measuring & Marking

Once you are sure measurements are exact use a pencil to mark laminate. Note: Ensure you allow for any edging to be added.

Cutting

When using a handsaw cut through from laminate surface. A sharp fine tooth, minimum of 10/12 teeth per inch saw is ideal for a perfect cut.

When using a Circular saw, cut from underside of the worktop. With the worktop face down follow your marking so that the saw teeth cuts towards the laminate surface.

When using other power tools please start by doing a trial cut on a scrap piece of worktop to check what side of the worktop provides the best cut (the underside or top side of the worktop).

Cut Out Hobs and Sinks

Use the pattern supplied with the sink to mark out. All cut edges must be sealed with water resistant materials, like polyurethane or silicone etc.

Guarantee of Quality

We offer a 5 year guarantee against any manufacturing defects providing that all installation and care instructions are strictly followed subject of course to normal wear and tear.

Due to the inherent properties of gloss laminate, we do not accept any responsibility for the performance of the decorative laminate surface. It is therefore imperative that the Gloss Care & Maintenance details are referred to both before and after installation, as misuse of all gloss laminates may affect the appearance of the work surface, particularly with regard to scratching.

Cleaning Instructions

There's nothing easier than cleaning and caring for your worktop.

A major advantage of these Worktops is that the High Pressure Laminate (HPL) surface makes cleaning so simple.

Usually a moist cloth is sufficient, but use washing-up liquid to get rid of any grease.

Stubborn dirt can be removed with an organic solvent such as methylated spirits or alcohol.

A brush with hard bristles (but not wire brushes) may also be used, but not on glossy worktops.

Light Stains/Dirt

Dry or damp paper towels, a cloth or sponge

Normal Stains/Dirt

e.g. fat, oil and dirt particles, fingermarks, lime deposits, rust, juice, coffee, tea, wax, blood, universal marker etc.

With a cloth or soft nylon brush and washing powder, soft soap, toilet soap or washing-up liquid. If necessary, leave for a while and then rinse thoroughly with clean water.

Cleaning and Caring for your Gloss Worktop

Always use a chopping board/worktop saver. Gloss worktops will show scratching, cuts, heat damage, more easily than a standard finish worktop.

General cleaning of the surface requires only a damp cloth and a mild detergent or non-abrasive cleaner diluted in warm water.

Abrasive scouring powders, creams and even polishes should all be avoided. Potentially persistent

stains should be removed immediately. Buff the surface after cleaning with a soft cloth.

Care Notes

Always avoid placing hot saucepans/kitchen utensils directly onto the worktop, always use a protective pad/mat (worktop saver).

Always avoid cutting or chopping directly on the worktop. Always use a protective mat (worktop saver).

Always avoid excess water around areas where there are cut joints and cut outs as these are potential weak areas. Wipe away excess water immediately.

Do not leave anything wet; for example damp cloths and sponges, on the top front edge.

Décor	Texture	Square Edge Worktop	Rounded Edge Worktop	Breakfast Bar	Upstand	Splashback
White Fleck	Matte	♦	♦	♦	♦	♦
Sand Pebble Sparkle	Gloss		♦	♦	♦	♦
Snow Sparkle	Gloss		♦	♦	♦	♦
Stormy Sky	Matte		♦	♦	♦	♦
Misty Sky	Matte		♦	♦	♦	♦
Grey Lunar Slate	Italian Stone		♦	♦	♦	♦
Industrial Concrete	Urban		♦	♦	♦	♦
District Stone	Urban	♦	♦	♦	♦	♦
Carrara Marble	Dogal		♦	♦	♦	♦
Athenian Marble	Matte	♦	♦	♦	♦	♦
Colorado Marble	Matte		♦	♦	♦	♦
Gransasso	Matte		♦	♦	♦	♦
Pietra Grey Marble	Matte		♦	♦	♦	♦
White Matte	Dogal		♦	♦	♦	♦
Black Rock	Rock		♦	♦	♦	♦
Walnut Butcher Block	Dogal		♦	♦	♦	♦
Sherwood Dark Oak	Kavir		♦	♦	♦	♦
Caledonian Grey Oak	Kavir		♦	♦	♦	♦
Delamere Light Oak	Natural	♦	♦	♦	♦	♦
Pembrey Oak	Kavir	♦	♦	♦	♦	♦
Colmar Oak	Dogal		♦	♦	♦	♦
Black Granite	Dogal		♦	♦	♦	♦
Sunstone	Matte	♦	♦	♦	♦	♦
Salto Rock	Italian Stone		♦	♦	♦	♦

REARO senses

Rearo Laminates Ltd

rearo.co.uk
sales@rearo.co.uk
0141 440 0800

29 Loanbank Quadrant
Glasgow G51 3HZ

